

# TEKNISK INFO

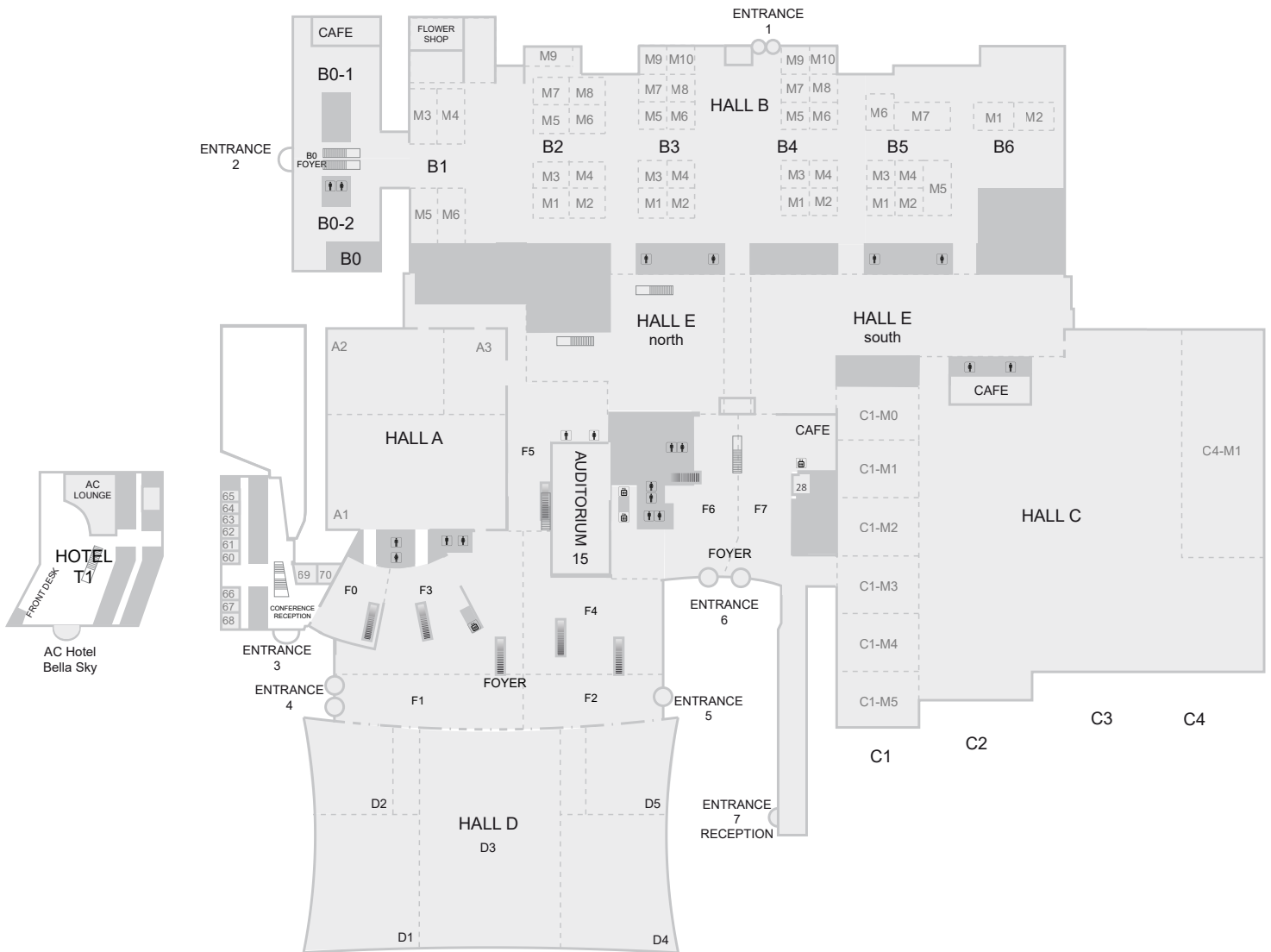
*TECHNICAL INFO*



# BELLA CENTER stue plan

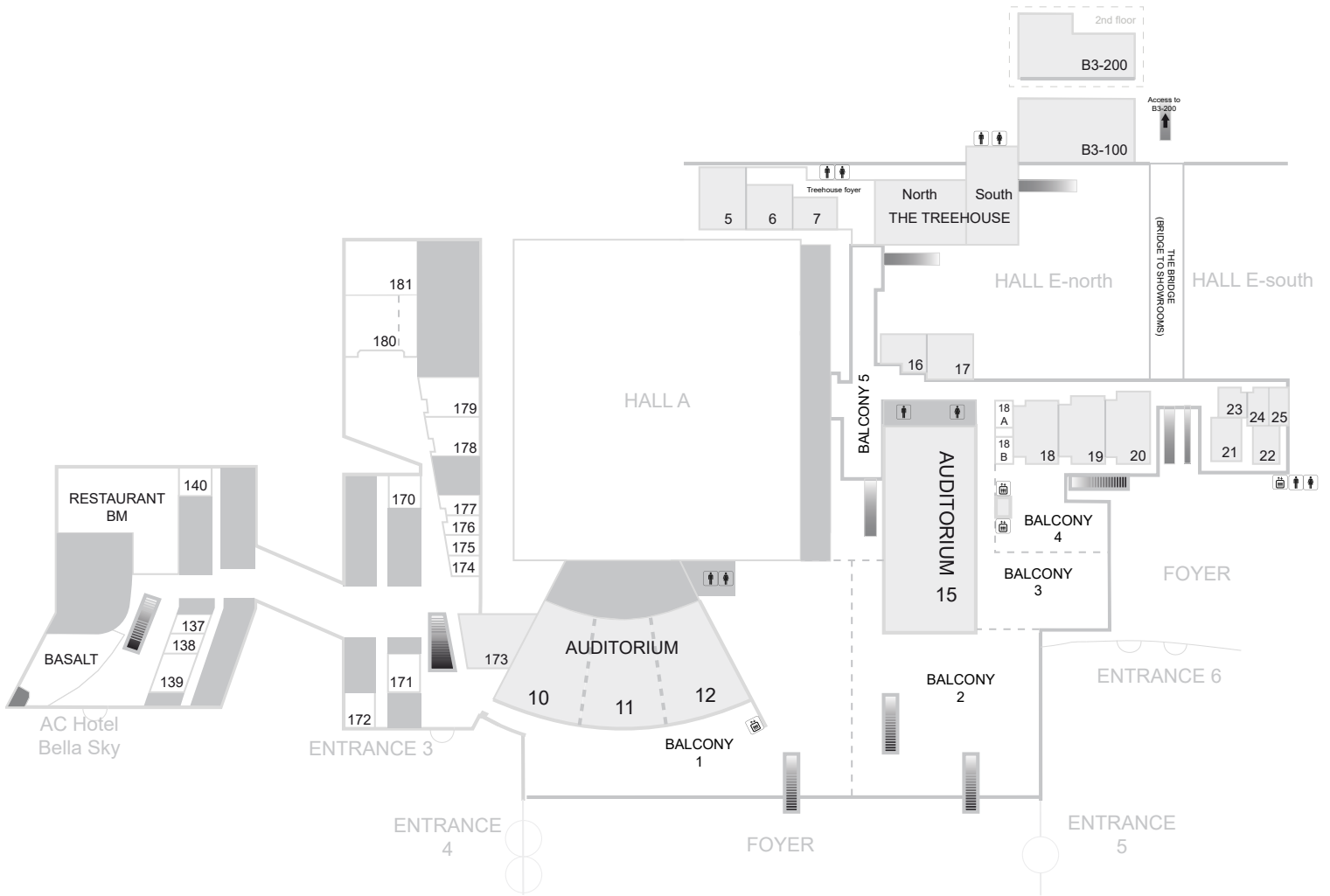
## Bella Center Ground plan

METRO



# BELLA CENTER 1. sal

Bella Center 1<sup>st</sup> Floor



## Indholdsfortegnelse

På de følgende sider finder du nyttige informationer om vores udstillingshaller. Reglerne er lavet for at sikre, at alle udstillere kan få optimale forhold under et arrangement, hvorfor vi beder dig læse dem grundigt. Har du yderligere spørgsmål, er du velkommen til at kontakte Bella Center.

Bella Center oversigt
Indholdsfortegnelse
Hal A
Hal B
Hal C
Hal D
Hal E
Foyer (F0-F7)

## Content

*On the following pages, you will find detailed information on our exhibition halls. The rules have been made to help ensure optimum conditions for all exhibitors during an event. Please read them carefully. If you have additional questions, please contact Bella Center.*

<i>Bella Center overview</i>	<a href="#">2</a>
<i>Content</i>	<a href="#">4</a>
<i>Hall A</i>	<a href="#">5</a>
<i>Hall B</i>	<a href="#">8</a>
<i>Hall C</i>	<a href="#">11</a>
<i>Hall D</i>	<a href="#">15</a>
<i>Hall E</i>	<a href="#">19</a>
<i>Foyer (F0-F7)</i>	<a href="#">22</a>

# Kongressal A

## – en kort beskrivelse

### Adgang til hallen

På tegningen kan du se numrene for de enkelte porte, der giver adgang til hallen.

### Hallens frihøjde

Hallens frihøjde er variabel op til 8,90m målt fra underkanten af loftets lys sætning.

### Belysning

I hallens loftflåde hænger der lysarmatur med 3x14W lavenergi lysrør til hallens generelle belysning. Lysstyrken kan dæmpes. Halogenbelysning, lavet som stjernehimel, kan tændes i 3 niveauer: 33%, 66% og 100%

### Loft/Ophængning i loft

Installation af el, vvs, netværk og trykluft trækkes fra loftet.

**Wirer:** De fleste steder i hallen kan der monteres wirer med en vægt fra 0-99 kg. Wirer med en vægt over 99 kg kræver speciel godkendelse. Kontakt venligst din kontaktperson i Bella Center for beregninger samt godkendelse  
Bella Center forbeholder sig ret til evt. at tilpasse placering.

**Taljepunkter og rigning:** Der kan rigges i spær. Der arbejdes med variable vægt, ift. loftets totalbelastning.  
Detailtegningen indeholder information om riggepunkternes placering  
Hvis I har behov for ophæng i en position mellem to riggepunkter, kan det opnås med enten bridling eller ved at hænge et rig-stykke.  
Per riggepunkt kan der som udgangspunkt maksimalt hænges 500 kg.  
Har I brug for rigning, at bridle eller opsætte rig-stykke, bedes I kontakte jeres kontaktperson for muligheder, validering og tilbud.

Bella Center forbeholder sig ret til evt. at tilpasse placering.

### Gulv

Gulvet er dækket af mørkeblåt gulvtæppe med mønster.  
Gulvet kan klare følgende belastninger:  
Punktbelastning fordelt på 15x15cm = 4000 kg.

Kørsel i områderne med udendørskøretøjer kræver speciel godkendelse.

### Vægge

Dækket af stofgardin fra loft til gulv.

Brandskab, L75xW25xH85cm – må ikke tildækkes.

### Luft

Hallen har luftkonditioneret ventilation.

## Congress Hall A – a brief description

### Accessing the hall

Please refer to the floorplan where access points are indicated.

### Ceiling height

Ceiling heights vary up to 8.90m, measured from the under edge of the ceiling flood lighting.

### General lighting

The hall is equipped with 3x14W fluorescent low-energy light fittings for general lighting. The brightness can be regulated. Halogen lighting, made as starry sky, can be turned into 3 levels: 33%, 66% and 100%.

### Ceiling/ suspension in the ceiling

Power, plumbing, network as well as compressed air will be supplied from the ceiling.

**Drop wires:** Most places in the hall we can mount drop wires with a weight up to 99 kg. Drop wires exceeding 99 kg will require a special approval. Please contact your contact at Bella Center for calculations and approval.  
Bella Center reserves the right to to customize location.

**Hoist and rigging:** It is possible to use the truss for rigging. We are working with variable weight, depending on the total load of the ceiling.  
The floorplan contains information about the location of the rigging points.  
If You need suspension in a position between two rigging points, this can be achieved by either bridling or by hanging a rig-piece. In general a maximum of 500 kg can be hung per rigging point.

If you need rigging, bridling or to hang a rig-piece, please contact your contact at Bella Center for options, validation and offers.

Bella Center reserves the right to to customize location.

### Floor

The floor is covered with dark blue carpet with pattern.  
The floor can carry the following loads:  
Single-point load per 15x15cm = 4,000 kg.

Outdoor vehicles in the area will require a special approval.

### Walls

Covered by fabric curtain from ceiling to floor.

Fire hose reel cabinets, L75xW25xH85cm – must not be concealed.

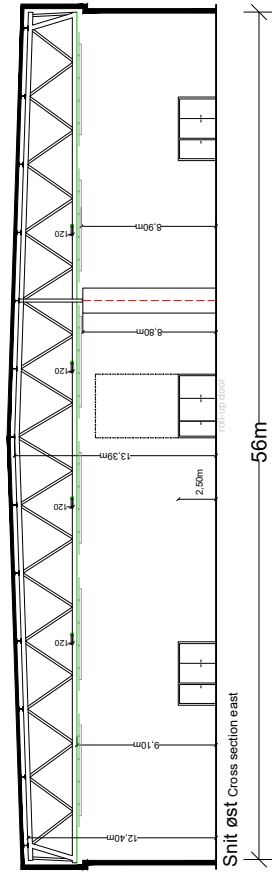
### Air

The hall has air conditioned ventilation.

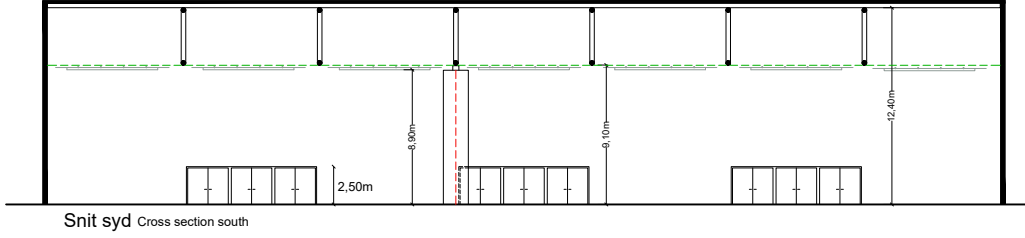
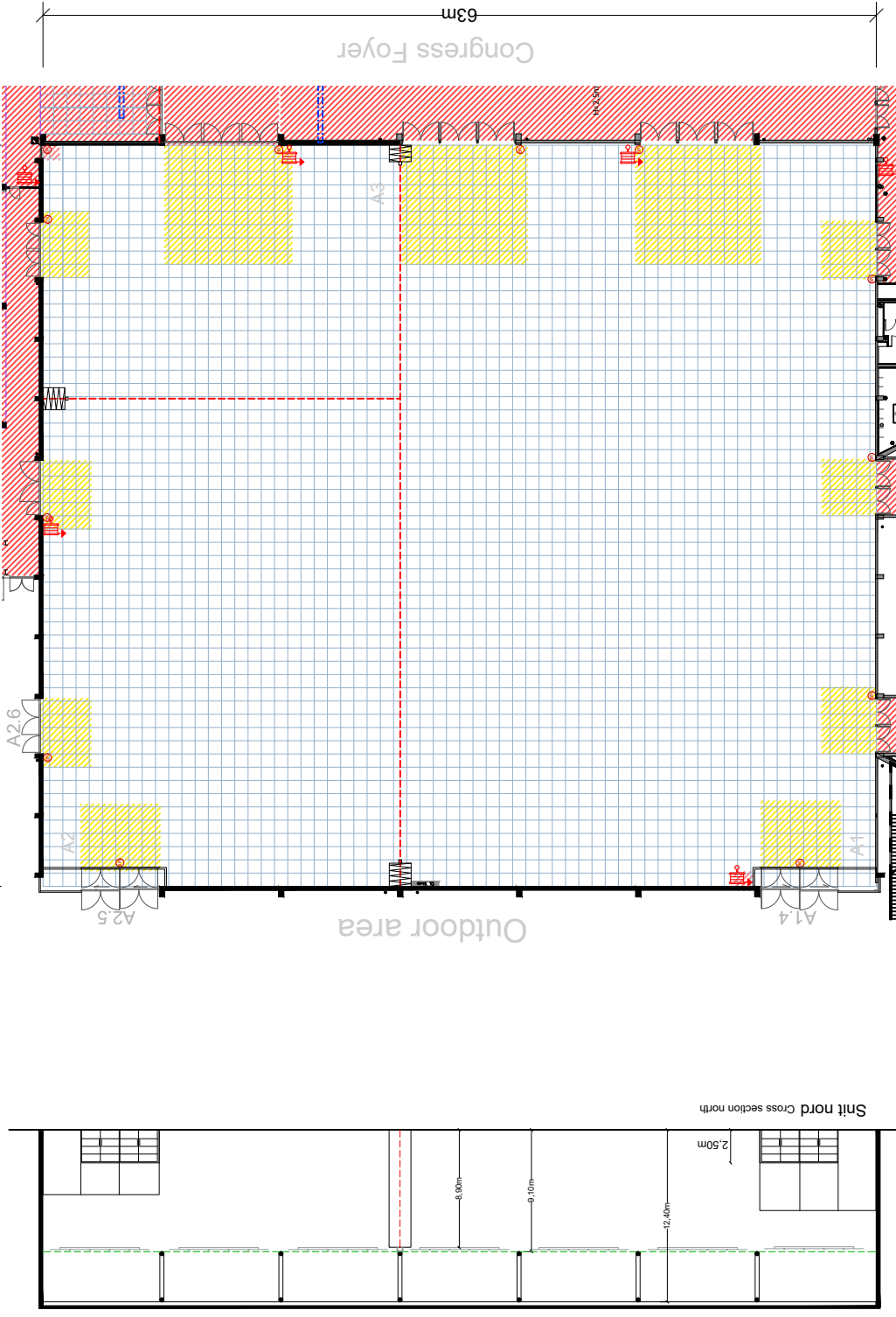
# HAL A

## Hall A

SCALE 1:500 - FORMAT A4



Snit øst Cross section east



Snit syd Cross section south

### DETAILS Gulv/Floor



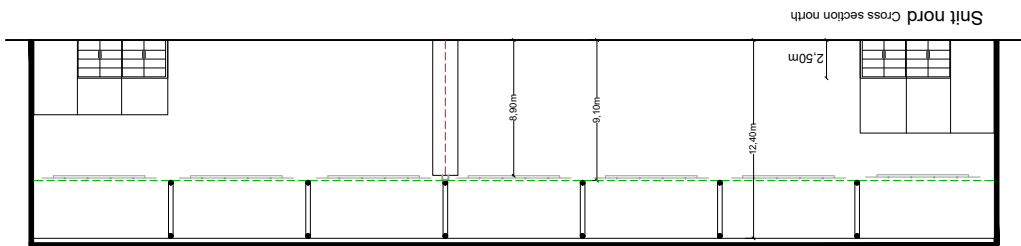
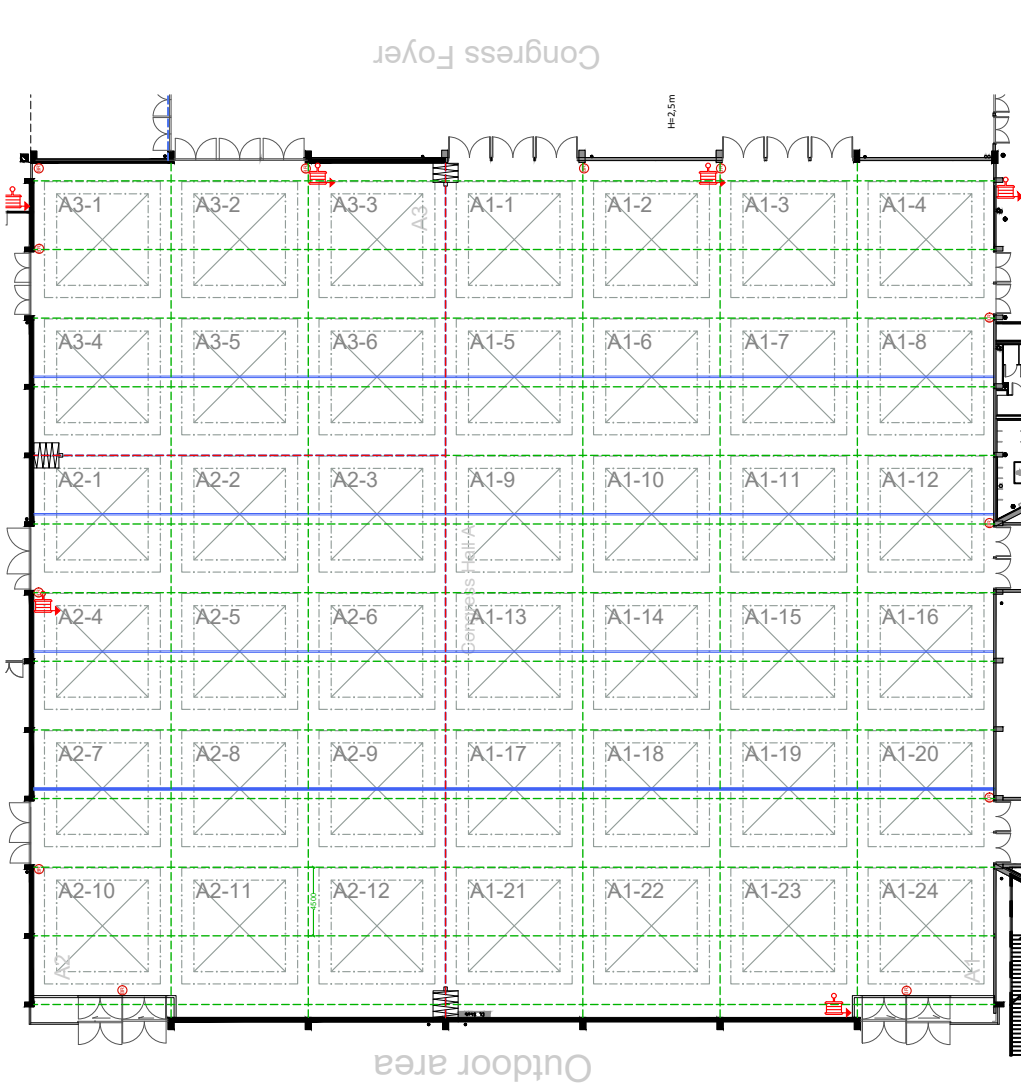
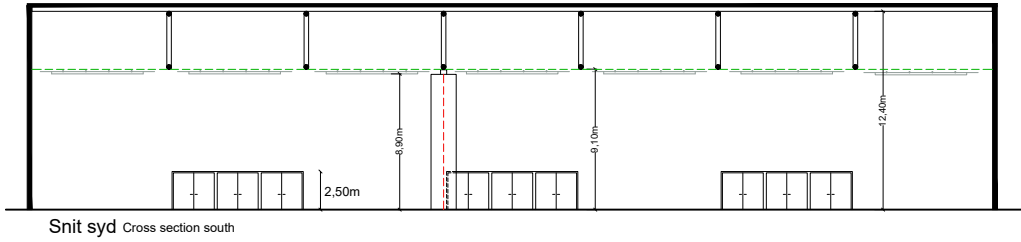
### Auditorium Foyer

- Brand Restriksjons Zone:**
- Gul- Begrenset indretning
  - Orange- Serfjelle betingelser og restriksjoner
  - Rødt- Oppbygning forbudt
- Fire Restrictions Zone:**
- Yellow- Limited usage
  - Orange- Special conditions and restrictions
  - Red- All Build up prohibited

# HAL A

## Hall A

SCALE 1:500 - FORMAT A4



### DETAILS Loft/Ceiling

BRANDTRYK  
Fire-alarm

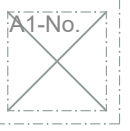
SLANGEVINDER  
Fire-hose reel

SPÆR TIL RIGGING  
Roof beam for rigging

SPÆR - IKKE TIL OVERBELASTNING  
Roof Non load beam

FOLDEVÆG  
Movable Wall

LOFTFLÅDE, 3x3m  
Ceiling fleet 3x3m



Auditorium Foyer

Congress Foyer

Outdoor area

Denmark Hall A

# Hal B

## – en kort beskrivelse

### Adgang til hallen

På tegningen kan du se numrene for de enkelte døre, der giver adgang til hallen. Større gods skal leveres via port B5-8.

### Hallens frihøjder

Frihøjderne i hal B er: 3m / 3,35m.  
Se haltegningen på side 10-11.

### Belysning

I hal B0 hænger der lysskinner med 70 Watt metalhalogen spots. Lyset er fastmonteret og må kun justeres af Bella Center personale.

I hal B1-B2 hænger der lysskinner med 30 Watt LED spots.

I hal B3-B5 er der monteret lysskinner med 11 Watt LED. 6 stk pr. 9m<sup>2</sup>. Desuden er der et lysarmatur med 3x14 Watt pr. 9m<sup>2</sup>.

I hal B6 er der monteret 70 Watt halogenlampe 6 stk pr. 9m<sup>2</sup>. Desuden er der et lysarmatur med 3x14 Watt pr. 9m<sup>2</sup>.

### Loft/Ophæng i loft

Installation af el, VVS og netværk mv. sker fra loftet.

I hal B0-B2 skal al rigning ske fra de fastmonterede øskner i loftet. Den maksimale belastning af øsknerne er 49kg pr. punkt. Detail-tegninger for stande vil indeholde information om riggepunkternes placering.

I hal B3-B6 er der ophængt et kabelbakkesystem, opdelt i 3x3m moduler. Kabelbakkesystemet er delt i 2 højder på henholdsvis 3,0m og 3,35m over gulv. Den maksimale belastning af kabelbakkeloftet er på 25 kg/m<sup>2</sup>. Vægskinnesystemet er ophængt 320cm over gulv.

### Gulv

I hal B0-B2 er gulvet et flydespartlet gulv.

I hal B3-B6 er gulvet lys gråmalet beton.

Gulvet kan klare følgende belastninger:

Hjultryk (tvillingehjul)	5.500 kg/m <sup>2</sup>
Punktbelastning fordelt på 15x15cm	4.000
Max belastning (lastbil inkl. læs)	4.000 kg/m <sup>2</sup>

### Søjler

I hal B0 er søjlerne midt i hallen runde med en diameter af 55cm og ved ydervægge er søjler 45x45cm.

I hal B1-B6 er betonsøjlerne 50x50cm, mens de ved ydervæggene er 25x50cm.

Brandskabe og slangevinder – må ikke tildækkes.

### Luft

Hal B har aircondition.

## Hall B – a brief description

### Accessing the hall

On the floor plan you will find the numbers of each gate entrance to the hall. Larger goods must be delivered through gate B5-8.

### Ceiling heights

Hall B has two ceiling heights: 3m / 3.35m.  
Please see the floor plan on page 10-11.

### Lighting

Hall B0 is equipped with spot rails containing 70 Watt metal halogen spots. The light is fixed and may only be adjusted by Bella Center staff.

Hall B1-B2 is equipped with spot rails containing 30 Watt LED spots.

Hall B3-B5 is equipped with spot rails containing 11 Watt LED spots. 6 pcs pr 9 m<sup>2</sup> and a 3x14 Watt low energy fluorescent light fitting per 3x3m grid module.

Hall B6 is equipped with spot rails containing 70 Watt halogen spots. 6 pcs pr 9m<sup>2</sup> and a 3x14 Watt low energy fluorescent light fitting per 3x3m grid module.

### Ceiling/suspension in the ceiling

Power, plumbing, network etc. will be supplied from the ceiling.

In hall B0-B2 all rigging must be made from the existing eyebolts in the ceiling. The maximum load on each eyebolt is 49 kg.

Detail drawings for stands will include information on the location of the rig points.

Hall B3-B6 is fitted with a modular cable tray grid, each modules measuring 3x3m. The grid is mounted in two heights: 3,0m and 3,35m as specified above.

### Floor

In hall B0-B2 the floor is a mottled design floor.

In hall B3-B6 the floor is painted concrete in a light grey colour.

The floor can carry the following loads:

Axle loads (twin wheels)	5,500 kg per sq.m.
Single point loads per 15x15cm	4,000 kg
Max load (load incl. weight of truck)	4,000 kg per sq.m.

### Pillars

In hall B0 the center pillars have a diameter of 55cm and against outer walls the pillars measure 45x45cm.

In hall B1-B6 the concrete pillars measure 50x50cm, whilst they measure 25x50cm along outer walls.

Fire hose reel – must not be concealed.

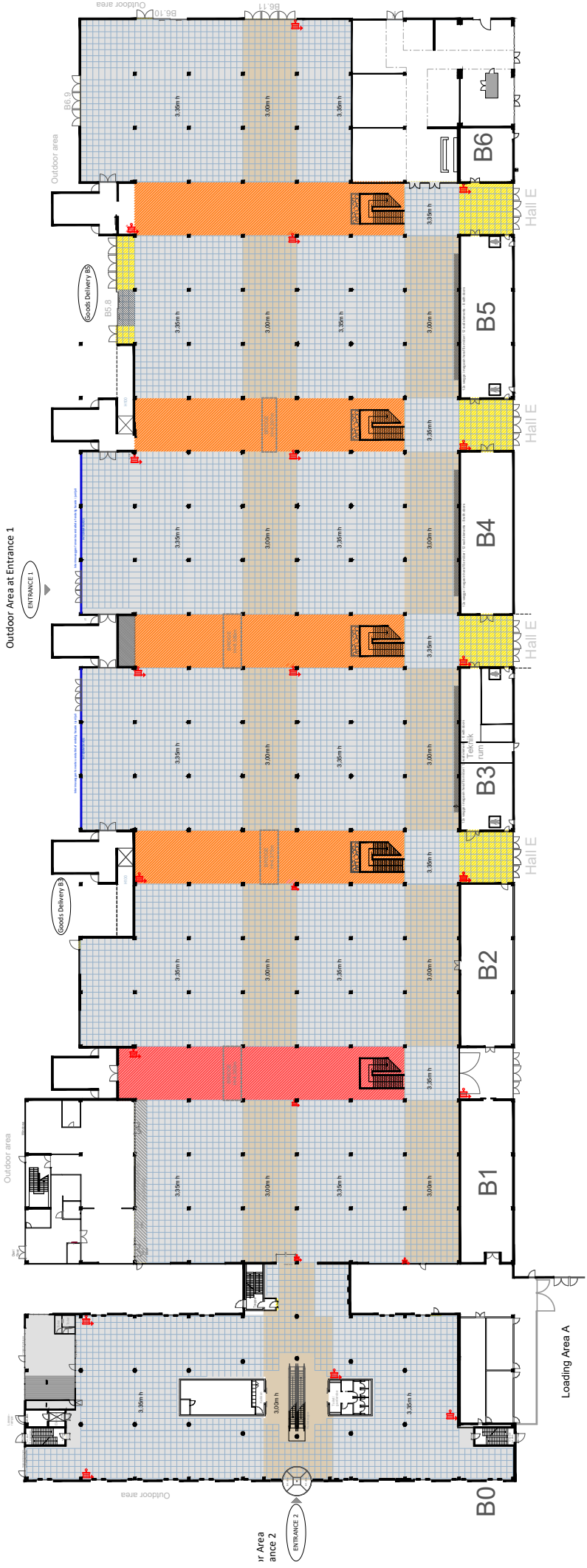
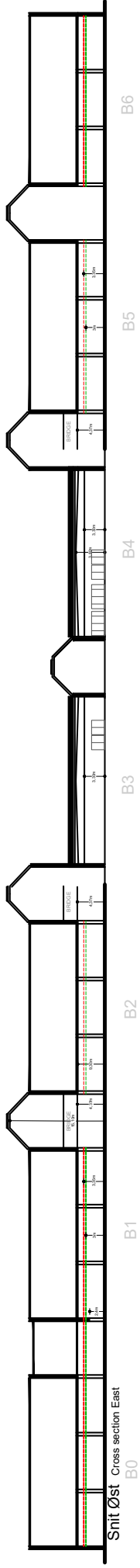
### Air

Hall B has air conditioning.

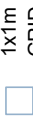


# Hall B

SCALE 1:1000 - FORMAT A4



## DETAILS Gulv/Floor



**Brand Restrictions Zone:**

- Yellow: Limited usage
- Orange: Special conditions and restrictions

**Brand Restrictions indrøining:**

- Orange: Seriligs betingelser og restriktioner

**Fire Restrictions Zone:**

- Yellow: Limited usage
- Orange: Special conditions and restrictions

HØLLENS FRIHØJDE

SØJLE Ø55CM

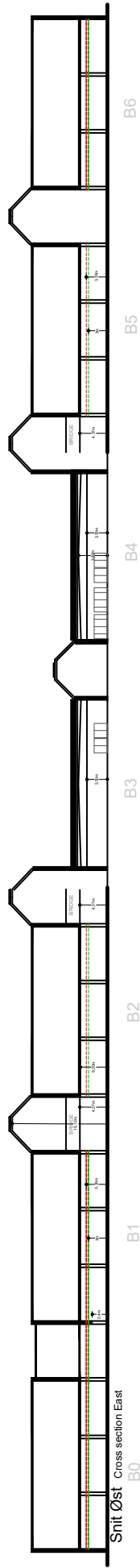
SØJLE 50x50CM

SLANGEVINDER

BRANDTRYK

# HAL B Hall B

SCALE 1:1000 - FORMAT A4



## DETAILS Loft/Ceiling

-  RØRANTPØK
-  SI ANCEVINDER
-  SØ.I.F. 50x50CM
-  SØ.I.F. Ø55CM
-  I YSRIG MFD SPOTS
-  LYSARMATUR 3x14W
-  RIGGE PUNKT

# Hal C

## – en kort beskrivelse

### Adgang til hallen

På tegningen kan du se numrene for de enkelte porte, der giver adgang til hallen.

### Hallens frihøjder

Hver af hallens fire sektioner har sin egen frihøjde, målt fra gulv til underkant lamper:

C1: 4,30m, C2: 5,85m, C3: 6,85m, C4: 6,85m. Se side 13-14.

### Belysning

Hallen er udstyret med permanente rigkonstruktioner med 150W Powerball Spots, farve 5000 kelvin, som skal tilkøbes jævnfør tilbud.

Til den generelle belysning hænger der (3x58 W) lysarmaturer.

### Loft/Ophængning i loft

Netværk trækkes fra loftet.

Wirer: Grundlæggende kan der ophænges 1 wire pr. 3 meter med en maks. belastning på 50 kg.

Det er muligt at lave andre vægtberegninger / -fordelinger. Kontakt venligst den Tekniske Koordinator for beregninger samt godkendelse

Bella Center forbeholder sig ret til evt. at tilpasse placering.

Taljepunkter og rigning:

Der kan rigges i spær. Der arbejdes med variable vægt, ift. loftets totalbelastning.

Detailtegningen indeholder information om riggepunkternes placering.

Hvis man har behov for ophæng i en position mellem to riggepunkter, kan det opnås med enten bridling eller ved at hænge et rig-stykke. Per riggepunkt kan der som udgangspunkt maksimalt hænges 200kg.

Se Rig info på side 15.

Har du brug for rigning, at bridle eller opsætte rig-stykke, bedes du kontakte din kontaktperson i Bella Center for muligheder, validering og tilbud.

Bella Center forbeholder sig ret til evt. at tilpasse placering.

### Gulv

Gulvet er gråmalet beton (farvekode Ral 7038). Installation af el, netværk, VVS og trykluft sker via kanaler i hallens betongulv. Kanalernes indbyrdes afstand er 6 m.

Gulvet kan klare følgende belastninger:

Hjultryk (tvillingehjul)	5.500 kg/m <sup>2</sup>
Punktbelastning fordelt på 15x15cm	4.000 kg
Max belastning (lastbil inkl. læs)	4.000 kg/m <sup>2</sup>

### Søjler

De fritstående søjler i hallen er 40x80cm og placeret for hver 9 meter. Søjlerne i ydervæggene er 35x40cm.

Brandskab og slangevinder – må ikke tildækkes.

### Luft

Hal C har aircondition.

## Hall C – a brief description

### Accessing the hall

Please refer to the floorplan where access points are indicated.

### Ceiling heights

Each of the four sections in hall C has its own ceiling height, measured from the floor to the lower edge of the lighting truss:

C1: 4.30m, C2: 5.85m, C3: 6.85m, C4: 6.85m.

Please see page 13-14.

### General lighting

The hall is equipped with permanent lighting truss with 150W Powerball Spots, color 5000 kelvin. The solution is offered according to quote.

General hall light fittings (3x58 W)

### Ceiling/suspension in the ceiling

Network cables will be supplied from the ceiling.

Drop wires: Most places in the hall we can mount drop wires with a weight up to 50 kg. Drop wires exceeding 50kg will require a special approval. Please contact your Technical Coordinator for calculations and approval.

Bella Center reserves the right to to customize location.

Hoist and rigging:

It is possible to use the truss for rigging. We are working with variable weight, depending on the total load of the ceiling.

The floorplan contains information about the location of the rigging points.

If You need suspension in a position between two rigging points, this can be achieved by either bridling or by hanging a rig-piece.

In general a maximum of 200 kg can be hung per rigging point.

Please see Rig Info on page 15.

If you need rigging, bridling or to hang a rig-piece, please contact your contact at Bella Center for options, validation and offers.

Bella Center reserves the right to to customize location.

### Floor

The floor is concrete, painted light grey (color code Ral 7038). Power, plumbing, network and compressed air will, if possible, be supplied via the subfloor services ducts which are build-in the floor at 6 m intervals.

The floor can carry the following loads:

Wheel loads (twin wheels)	5,500 kg per sq.m.
Single point loads per 15x15cm	4,000 kg
Max loads (load incl. weight of truck)	4,000 kg per sq.m

### Pillars

40x80cm freestanding concrete pillars line the arcade sections running east/west at intervals of 9m.

Pillars let into the outer walls measure 35x40cm wide.

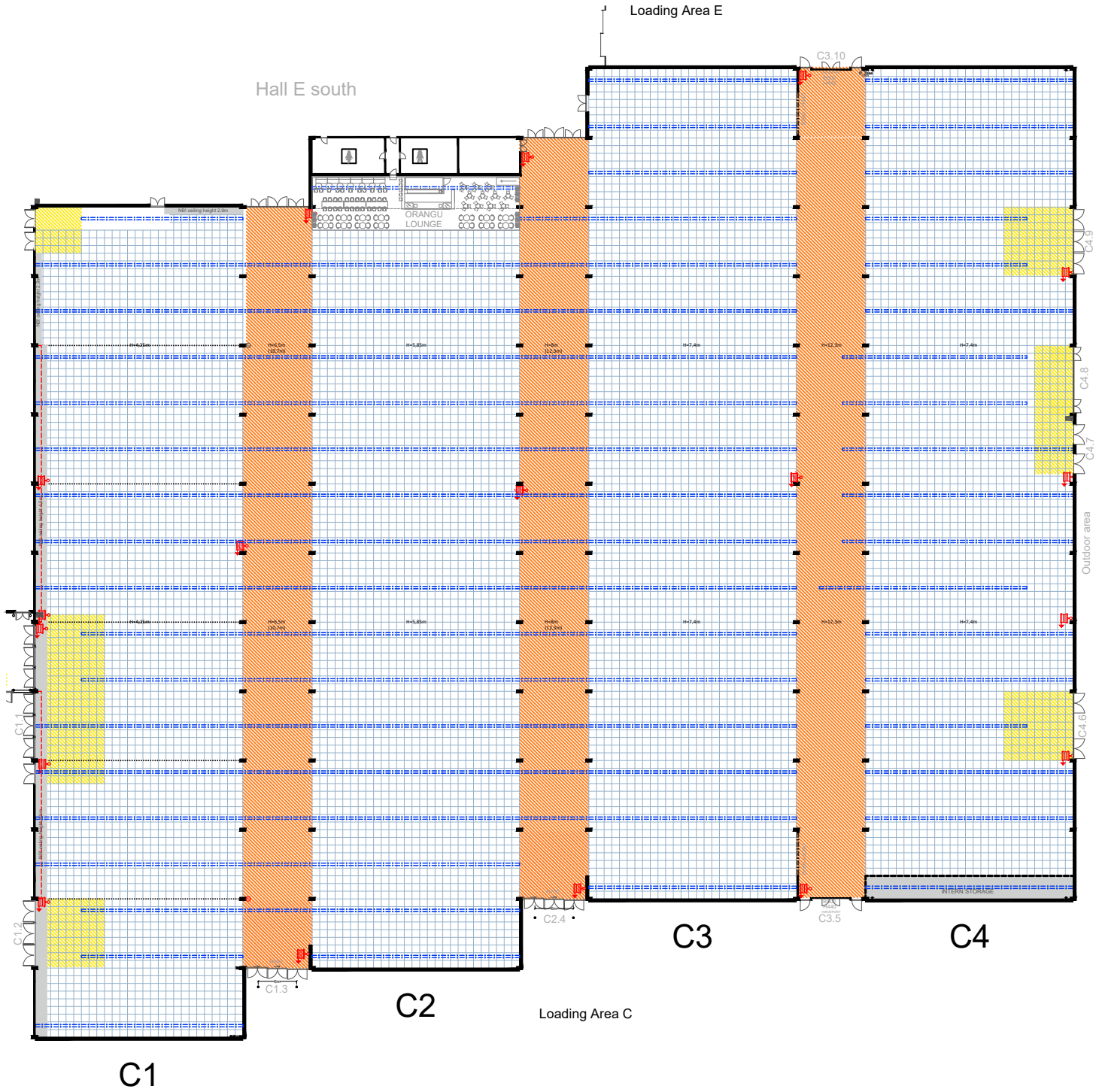
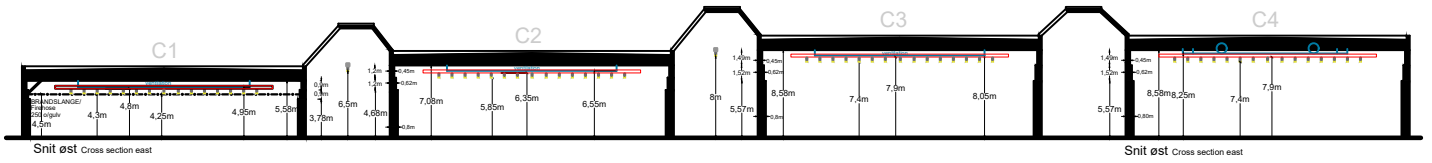
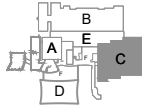
Fire hose reel – must not be concealed.

### Air

Hall C has air conditioning.

# HAL C Hall C

SCALE 1:750 - FORMAT A4

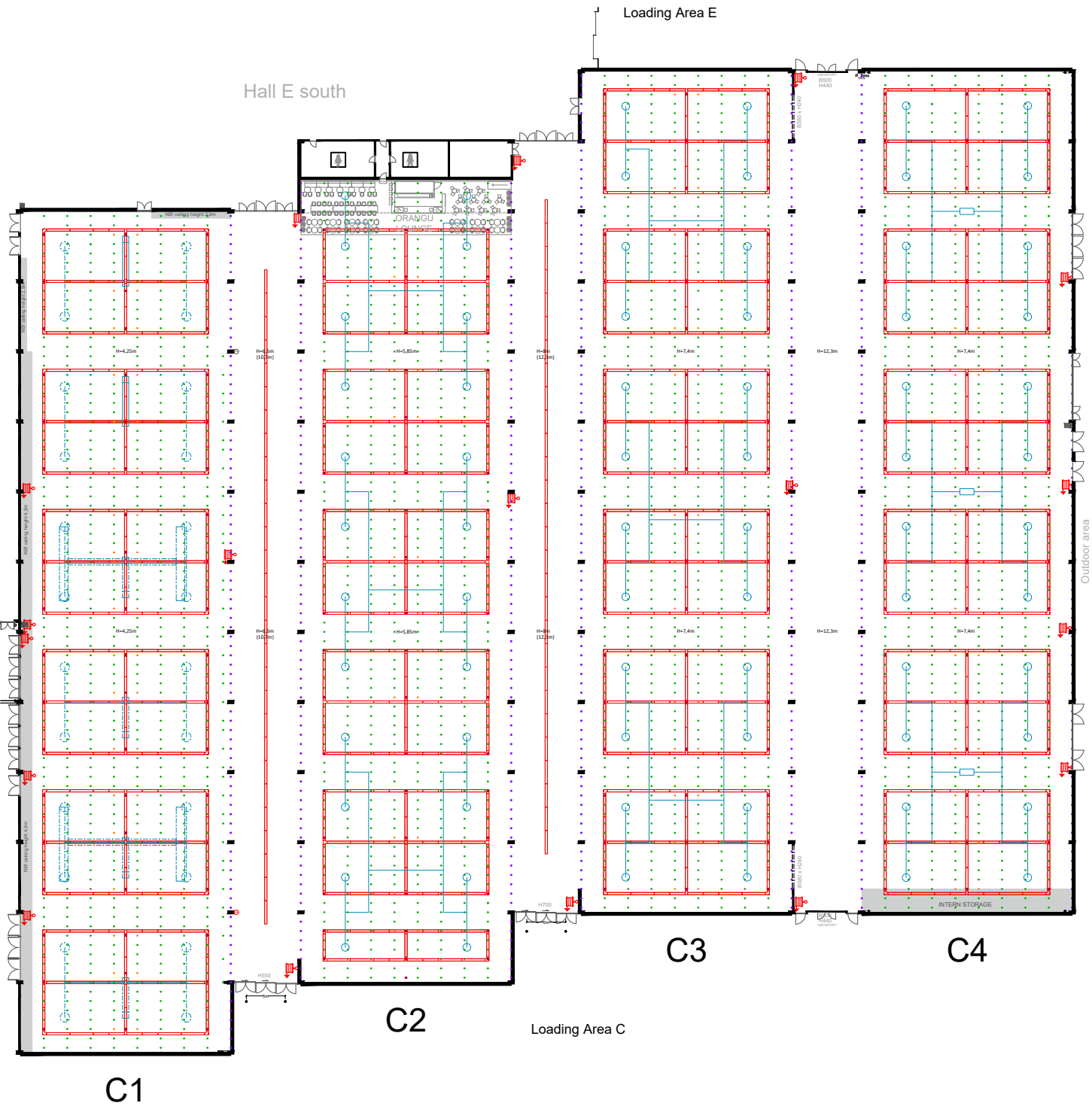
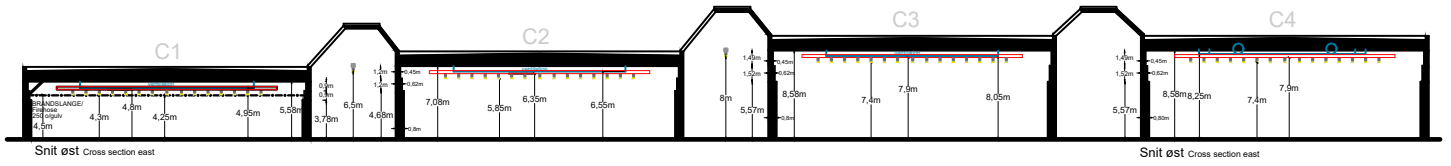
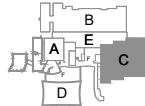


## DETAILS Gulv/Floor




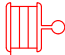


- |   |  |                                       |   |   |
|---|--|---------------------------------------|---|---|
| 1x1m<br>GRID                                  | <b>BRANDTRYK</b><br><i>Fire-alarm</i>        | <b>ELSKAB</b><br><i>Power cabinet</i> | <b>Brand Restriktions Zone:</b><br>-Gul-<br>Begrænset indretning<br>-Orange-<br>Særlige betingelser og<br>restriktioner<br>-Rød-<br>Opbygning forbudt | <b>Fire Restrictions Zone:</b><br>-Yellow-<br>Limited usage<br>-Orange-<br>Special conditions and<br>restrictions<br>-Red-<br>All Build up prohibited |
| <b>SØJLE 40x80CM</b><br><i>Pillar 40x80cm</i> | <b>SLANGEVINDER</b><br><i>Fire-hose reel</i> | <b>KABELGRAV</b><br><i>Cable duct</i> |   |   |

# HAL C Hall C

SCALE 1:750 - FORMAT A4

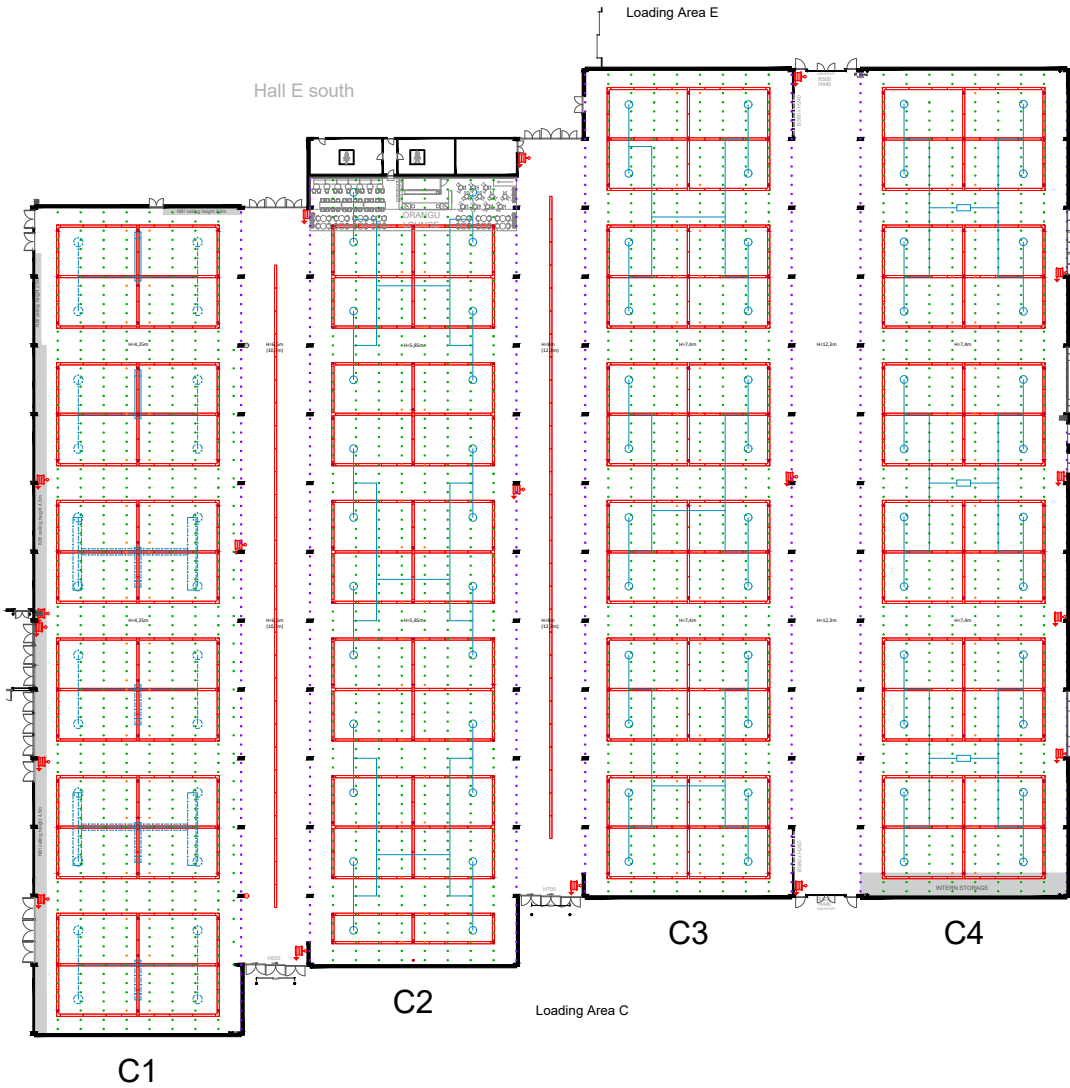
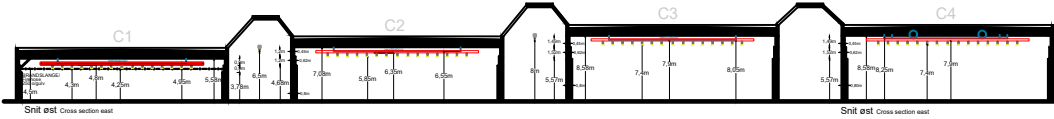
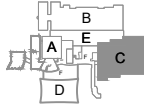


## DETAILS Loft/Ceiling

-  BRANDTRYK  
Fire-alarm
-  LYS RIG M/SPOTS  
Lighting truss with spots
-  SØJLE 40x80CM  
Pillar 40x80cm
-  SLANGEVINDER  
Fire-hose reel
-  VENTILATION  
Ventilation
-  RIGGEPUNKTER I LOFT  
Rigging points in ceiling

# HAL C Hall C

SCALE 1:750 - FORMAT A4

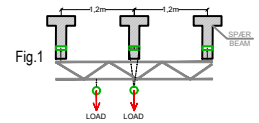


## RIGGING INFORMATION

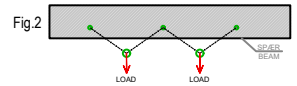
**NOTE (DK):**

**Rigging - sikkerheden i højsædet**

På tegningen over C-hallen kan man se alle brugbare riggehuller  
De er markeret med symbolet , og man kan altid rigge direkte i dem med en vægt på op til 200 kg (Fig. 1).



Hvis man har behov for ophæng i en position mellem to riggepunkter, kan det opnås med enten bridling (hvis riggehullerne er i samme spær - se Fig 2) eller ved at underhænge et rigstykke mellem to eller flere spær (Fig. 1). Hvis der er behov for et rigstykke, så kontakt din koordinator for et tilbud. Koordinatoren kan også vejlede generelt omkring mulighederne.



Rigge huller (afstand imellem spær 120cm)

- Grøn - 200kg
- Lilla - 200kg
- Orange - 50kg
- Rød - TP er i brug til fast rig. Kan ikke belastes yderligere

Laster er totalaster inkl. talje beslag, rig mv.  
Ved horisontalt brug af rig huller kan der bridles (Fig 2)  
Ved vertikalt brug af rig huller skal der underhænges et rigstykke. (Fig. 1)

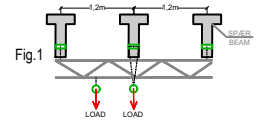
De riggehuller, der bruges til den permanente rig, kan ikke belastes yderligere.

Øvrige punkter kan belastes med 200kg pr. punkt.

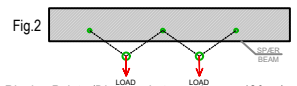
**NOTE (UK) :**

**Rigging - safety first**

The drawing of the C-hall shows all accessible rigging points indicated with the symbol . All of these rigging points separately for rigging up to 200kg (Fig. 1).



If you have a need for rigging between two rigging points, this can be solved by using bridling (if the points are in the same beam - Fig 2) or by adding a truss underneath two beams or more (Fig. 3). Please contact your coordinator for further inquiries and quotes.



Rigging Points (Distance between beams 120cm)

- Green - 200kg
- Purple - 200kg
- Orange - 50kg
- Red - In use for permanent truss - no extra load allowed

Load is a total of chains, blocks, truss etc.  
Bridling is allowed between rigging points on the same beam. (Fig 2)

Bridling is not allowed between rigging points placed on adjacent beams. Specific rigging positions can still be achieved by hanging a truss underneath. (Fig. 1)

The rigging points already in use for the permanent truss cannot be exposed with extra load.

All other rigging points can be used for 200kg

### DETAILS Loft/Ceiling

- BRANDTRYK  
Fire-alarm
- LYS RIG M/SPOTS  
Lighting truss with spots
- SØJLE 40x80CM  
Pillar 40x80cm
- SLANGEVINDER  
Fire-hose reel
- VENTILATION  
Ventilation
- RIGGE PUNKTER I LOFT  
Rigging points in ceiling

# Hal D

## – en kort beskrivelse

### Adgang til hal D

På tegningen kan du se adgangen til hal D.

### Hallens frihøjde

Underkant skørt: 11,7 meter

Underkant spær: 12,5 meter

Såfremt man har et specifikt krav til en lofthøjde i et givent område bedes dette afklares med koordinator.

### Belysning

Hallen er udstyret med en grundbelysning, der kan zone inddeles og dæmpes (1-100%).

Lyskilde: Pendelarmatur Lumitech LUFO IV: LED 20.000 Lumen out. 3.000 Kelvin, CRI 80-89. MacAdam SDCM 3. Dali dimmable (1-100%). Flicker free. Blænding under 25. Minimum 300 lux på gulv. Hallen inddelt i 38 zoner tilsluttet DMX House Control.

### Loft/Ophængning i loft

Brandventilationsvinduerne i loftet er uden lysindfald.

Wirer: Der kan ophænges wire med en maks. belastning på 99 kg, dog afhængigt af øvrig ophængning i loftet. Kontakt venligst din kontaktperson i Bella Center for beregninger samt godkendelse.

Bella Center forbeholder sig ret til evt. at tilpasse placering.

Taljepunkter og rigning: I spær kan der minimum ophænges 60 kg per meter eller 180 kg per 3 meter, dog afhængigt af øvrig ophængning i loftet.

Detailtegningen indeholder information om riggepunkternes placering

Hvis man har behov for ophæng i en position mellem to riggepunkter, kan det opnås ved at hænge et rig-stykke. Har du brug for rigning eller opsætte rig-stykke, bedes du kontakte din kontaktperson i Bella Center for muligheder, validering og tilbud. Bella Center forbeholder sig ret til evt. at tilpasse placering.

### Gulv

Gulvet er et flisebelagt betongulv. Flisen er en lys betonflise. Gulvet er udført med en række forsyningskanaler, som ligeledes er dækket af aftageligt dæksel.

Gulvet kan klare følgende belastninger:

- 15x15 cm jævnt fordelt trykflade = 2500 kg
- 30x30 cm jævnt fordelt trykflade = 4000 kg

Hallen har gulvkanaler til fremførsel af vand, internet og VVS. Kanalernes indbyrdes afstand (c-c) er 9 m. Kanalerne er 60 cm brede. Kanaldæksel: 60x120cm. Disse kan klare overkørsel fra 9t akseltryk fra lastbiler. Lastbiler og/eller trucks må dog ikke parkere med hjulene lige på lågene, og længerevarende enkeltlaste over 1000 kg fordelt på 30x30cm skal undgås.

## Hall D – a brief description (1 of 2)

### Accessing Hall D

Please refer to the floor plan where access points are indicated.

### Ceiling height

Lower edge of skirt: 11,7 meter

Lower edge of truss: 12,5 meter

If you have a specific requirement for a ceiling height in a given area, please clarify this with your coordinator.

### General lighting

The hall is equipped with a basic lighting that can be zoned and dimmed (1-100%).

Light source: Pendant luminaire Lumitech LUFO IV: LED 20,000 Lumen out. 3,000 Kelvin, CRI 80-89. MacAdam SDCM 3. Dali dimmable (1-100%). Flicker free. Glare below 25. Minimum 300 lux on floor. The hall is divided into 38 zones connected to DMX House Control.

### Ceiling/suspension in the ceiling

The fire ventilation windows in the ceiling are without inflow of lights.

Drop wires: We can mount drop wires with a weight up to 99 kg., however, depending on other suspensions in the ceiling. Please contact your contact at Bella Center for calculations and approval.

Bella Center reserves the right to to customize location.

Hoist and rigging: It is possible to use the truss for rigging. Up to 60 kg per m or 180 kg per 3 m, however, depending on the other suspensions in the ceiling.

The floorplan contains information about the location of the rigging points.

If You need suspension in a position between two rigging points, this can be achieved by hanging a rig-piece. If you need rigging or to hang a rig-piece, please contact your contact at Bella Center for options, validation and offers.

Bella Center reserves the right to to customize location.

### Floor

The floor is a tiled concrete floor. The tile is a light concrete tile. The floor is designed with a number of supply ducts, which are also covered by a removable cover.

The floor can withstand the following loads:

- 15x15 cm evenly distributed printing surface = 2500 kg
- 30x30 cm evenly distributed printing surface = 4000 kg

The hall has subfloor services ducts for water, internet and plumbing. The distance between the ducts (c-c) is 9 m. The ducts are 60 cm wide. Duct cover: 60x120cm. These can handle overtaking from 9000 kg axle load from trucks. Trucks must not park with the wheels directly on the duct covers, and longer-lasting single loads over 1000 kg distributed over 30x30cm must be avoided.

# Hal D

## – fortsat

### Mobilvægge

Hallen er udstyret med mobilvægge til opdeling af hallen i op til 5 rum. Mobilvæggene kan parkeres i 4 tilhørende magasiner der er afdækket med væggardiner. Væggene må kun betjenes af Bella Center personale og mens hallen er uden gæster.

Dæmpning: 53dB  
Overflade og farve: Malet grå (RAL 7037) stålplade.

### Vægge

Brandskab og slangevinder – må ikke tildækkes.

Væggene er beklædt med henholdsvis vægtæpper og akustikpaneler i 3 dybder og med skærende fuger. Panelerne fremstår med perforerede, galvaniserede stålplader opsat med 3 forskellige afstandsdybder til væg.

### Vinduer og mørklægning

I hallens nord-, syd- og vestvendte facader er der vinduer, som kan mørklægges efter behov (manuelt med kontakt på væg ved vinduesparti).

### Port og døre

Det er muligt at benytte hallens porte til tung trafik (9 tons akseltryk).

Gavl port, D1, (bxh): 5,0 x 4,5 m  
Gavl port, D2, (bxh): 3,5 x 3,5 m  
Gavl port, D3, (bxh): 3,5 x 3,5 m  
Gavl port, D4, (bxh): 5,0 x 4,5 m  
Gavl port, D5, (bxh): 3,5 x 3,5 m

Udvalgte døre kan anvendes til kørsel med truck

### Lyd og støjgrænser

Af hensyn til gæster og naboer, må der maksimalt afspilles musik/lyd på 96dB(A).

Vores naboer må således kun opleve 40dB(A) i en halv time målt ved udvendig husfacade i tidsrummet kl. 22:00-07:00. For øvrige tidsrum, se:

<https://mst.dk/luft-stoej/stoej/stoejgraenser/graensevaerder-virksomheder/>.

### Luft

Hal D har aircondition

### Strøm

Hallen har en samlet strømkapacitet på 2.000A. Af disse kan der udtages 4 stk 400A via PowerLock i hallens sydlige væg. Til udstillinger m.m. er det muligt at fremføre strøm via hallens gulvkanaler, som går på tværs af hallens længderetning. De er placeret med 9 meters mellemrum og er som standard forsynet med 200A per kanal.

## Hall D– a brief description (1 of 2)

### Mobile Walls

*The hall is equipped with mobile walls for dividing the hall up to 5 individual rooms. The mobile walls can be parked in 4 related magazines covered with wall curtains. The walls may only be operated by Bella Center staff and while the hall is without guests.*

*Attenuation: 53 dB  
Surface and color: Painted gray (RAL 7037) steel plate.*

### Walls

*Fire cabinet and hose reel – must not be concealed.*

*The walls are covered with curtains and acoustic panels, respectively, in 3 depths and with intersecting joints. The panels appear with perforated galvanized steel sheets, set up in 3 different wall depths.*

### Windows and blackout

*In the north, south and west facing facades of the hall, there are windows that can be darkened if needed.*

### Gate and doors

*It is possible to use the hall gates for heavy traffic (9 tons axle load).*

*End gate, D1, (wxh): 5.0 x 4.5 m  
End gate, D2, (wxh): 3.5 x 3.5 m  
End gate, D3, (wxh): 3.5 x 3.5 m  
End gate, D4, (wxh): 5.0 x 4.5 m  
End gate, D5, (wxh): 3.5 x 3.5 m*

*Selected doors can be used for truck driving*

### Sound and noise limits

*For the sake of the guests and neighbors, the maximum for music/sound is 96dB (A)*

*Our neighbors may only experience 40dB (A) for half an hour, measured from the exterior house façade during the time 22:00-07:00. For other period of time, see:*

<https://mst.dk/luft-stoej/stoej/stoejgraenser/graensevaerder-virksomheder/>.

### Air

*Hall D has air conditioning.*

### Electric power

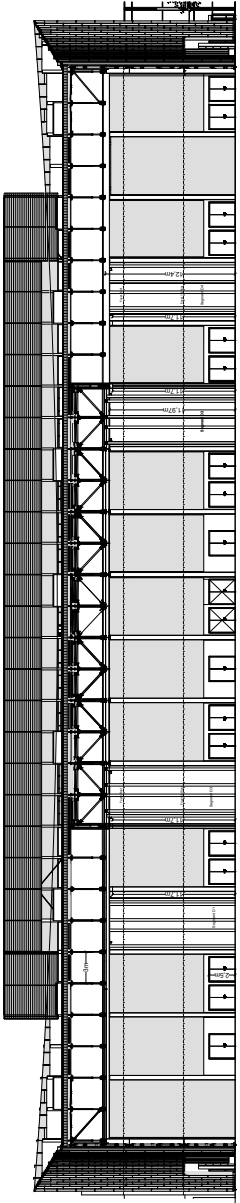
*The hall has a total electric power capacity of 2.000A. From these, can 4x 400A be taken out through PowerLock in the south wall of the hall. For exhibitions etc. it is possible to carry electric power in subfloor service ducts, across the longitudinal direction of the hall. They are located at 9 meter intervals and are equipped with 200A per duct as standard.*



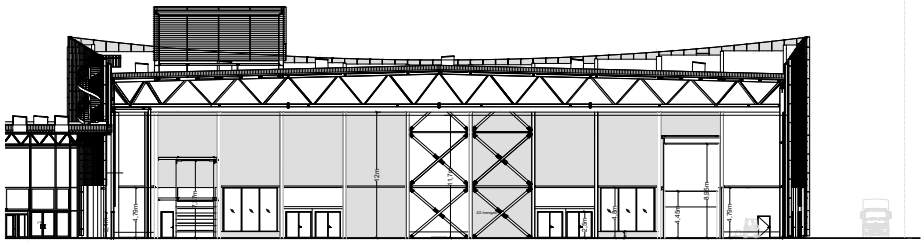
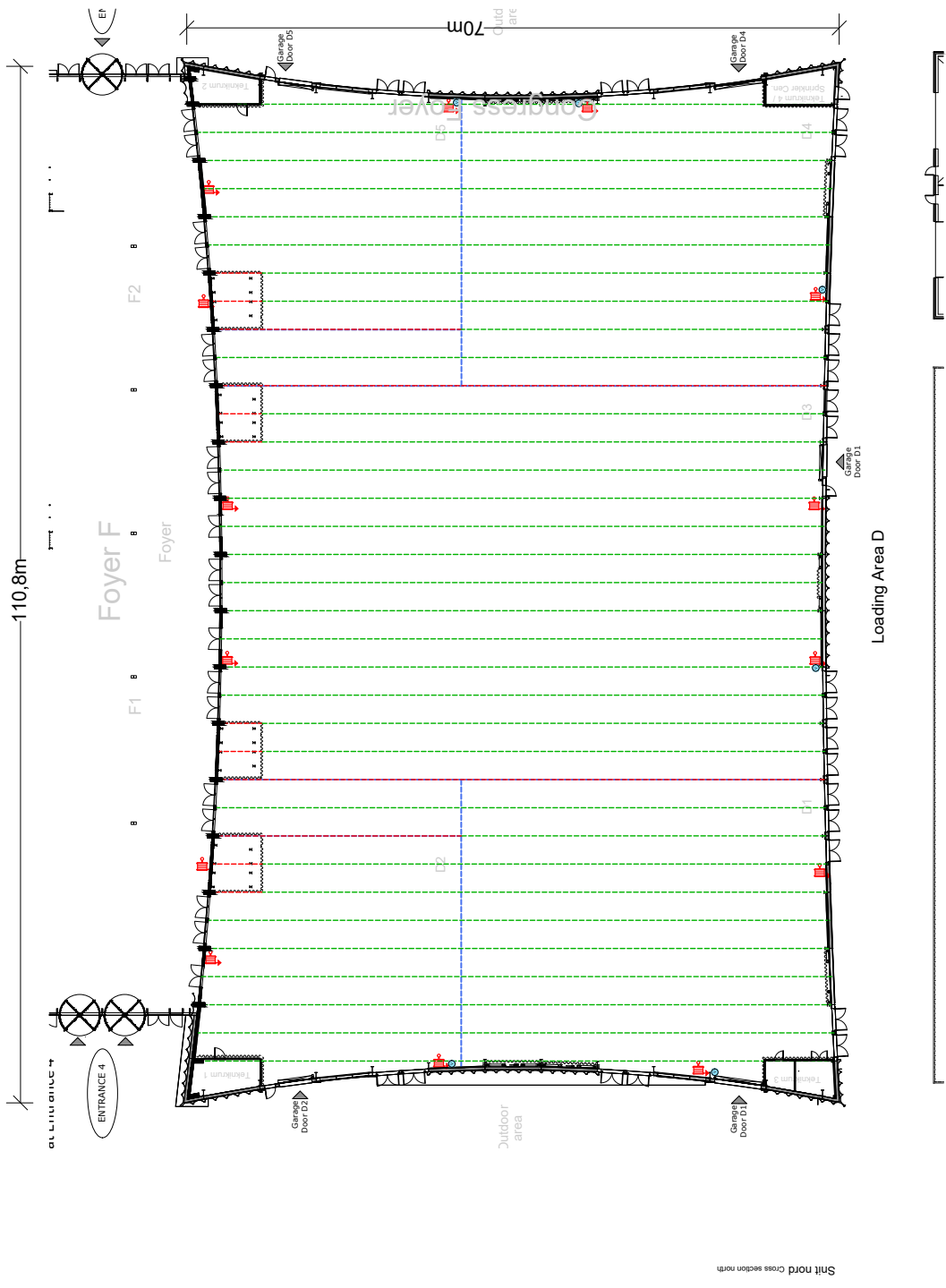


# HAL D Hall D

SCALE 1:750 - FORMAT A4



Snit øst Cross section east



Snit syd Cross section south

## DETAILS Loft/Ceiling

- BRANDTRYK  
Fire-alarm
- SLANGEVINDER  
Fire-hose reel
- SPÆR TIL RIGGING  
Roof beam for rigging
- SPÆR - IKKE TIL OVERBELASTNING  
Roof Non load beam
- FOLDEVÆG  
Movable Wall
- LYSPENDEL  
Light pendant

# Hal E

## – en kort beskrivelse

### Adgang til hallen

På tegningen kan du se numrene for de enkelte porte, der giver adgang til hallen.

### Hallens frihøjder

Hallens frihøjde, målt fra gulv til underkant af rig messelampe er 9,30m. Se side 21-22.

### Loft/Ophængning i loft

Wirer: Der kan ophænges wire med en maks. belastning på 99 kg, dog afhængigt af øvrig ophængning i loftet. Kontakt venligst din kontaktperson i Bella Center for beregninger samt godkendelse  
Bella Center forbeholder sig ret til evt. at tilpasse placering.

Taljepunkter og rigning: Der kan rigges i spær med op til 500kg per riggepunkt, dog afhængigt af øvrig ophængning i loftet.

Detailtegningen indeholder information om riggepunkternes placering

Hvis man har behov for ophæng i en position mellem to riggepunkter, kan det opnås ved at hænge et rig-stykke. Har du brug for rigning eller opsætte rig-stykke, bedes du kontakte din kontaktperson i Bella Center for muligheder, validering og tilbud.  
Bella Center forbeholder sig ret til evt. at tilpasse placering.

### Belysning

Hallen er udstyret med permanent rigkonstruktioner og 150W Powerball Spots, farve 5000 kelvin, som skal tilkøbes jævnfør tilbud.

Til den generelle hal belysning hænger der (3x58 W) lysarmaturer.  
Bemærk venligst, at sollys igennem glastaget kan være til gene ved brug af pc, video, osv.

### Gulv

Installation af el, VVS, netværk og trykluft sker via kanaler i hallens betongulv. Kanalerne ligger i hallens længderetning med en indbyrdes afstand på 15 m.

Gulvet kan klare følgende belastninger:

Hjultryk (tvillingehjul)	5.500 kg/m <sup>2</sup>
Punktbelastning fordelt på 15x15cm	4.000 kg
Max belastning (lastbil inkl. læs)	4.000 kg/m <sup>2</sup>

### Søjler

Hallens betonsøjler er 40x40cm eller 40x80cm.

Brandskab – må ikke tildækkes.

### Luft

Hallen har opvarmet ventilation med separate køleunits.

## Hall E – a brief description

### Accessing the hall

Please refer to the floor plan where access points are indicated.

### Ceiling heights

The ceiling height measured from the floor to the lower edge of the lighting truss is 9,30m. Please see page 21-22.

### Ceiling/suspension in the ceiling

Drop wires: We can mount drop wires with a weight up to 99 kg., however, depending on other suspensions in the ceiling. Please contact your contact at Bella Center for calculations and approval.  
Bella Center reserves the right to to customize location.

Hoist and rigging: It is possible to use the truss for rigging. Up to 500 kg per rigging point, however, depending on the other suspensions in the ceiling.

The floorplan contains information about the location of the rigging points.

If You need suspension in a position between two rigging points, this can be achieved by hanging a rig-piece. If you need rigging or to hang a rig-piece, please contact your contact at Bella Center for options, validation and offers.

Bella Center reserves the right to to customize location.

### General lighting

The hall is equipped with permanent lighting truss with 150W Powerball Spots, color 5000 kelvin. The solution is offered according to quote.

General hall light fittings (3x58 W). Please note that sunlight from the glass roof can cause inconvenience with reflected light when using pc's, videos etc.

### Floor

Power, plumbing, network and compressed air will, if possible, be supplied via the sub-floor service ducts build-in the Centre Hall's concrete floor. These run from north to south at 15 m intervals throughout the length of the hall.

The floor can carry the following loads:

Wheel loads (twin wheels)	5,500 kg per sq.m.
Single-point loads per 15x15cm	4,000 kg
Max loads (load incl. weight of truck)	4,000 kg per sq.m.

### Pillars

A limited number of free-standing concrete pillars are to be found in the northern end of the hall. These measure 40x40cm or 40x80cm.

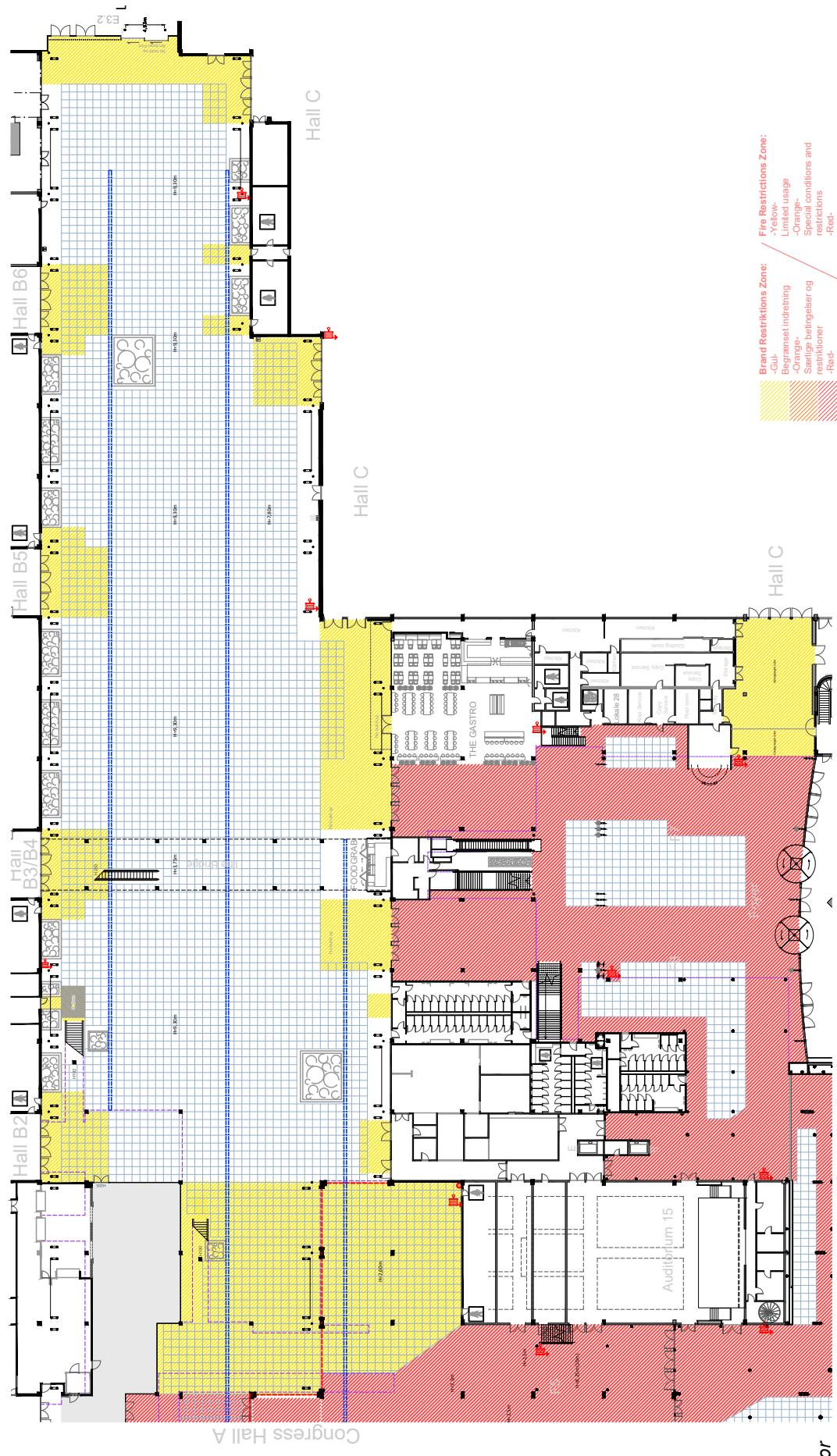
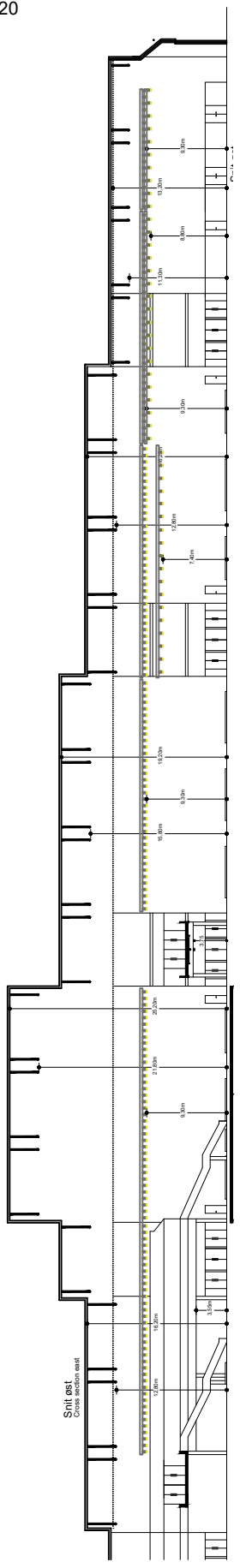
Fire hose reel – must not be concealed.

### Air

The hall has heated ventilation with separate cooling units.

# HALE Hall E

SCALE 1:750 - FORMAT A4



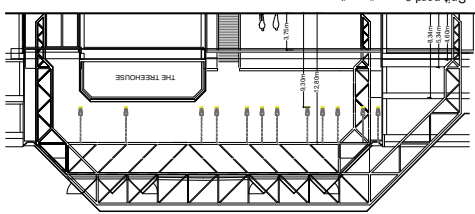
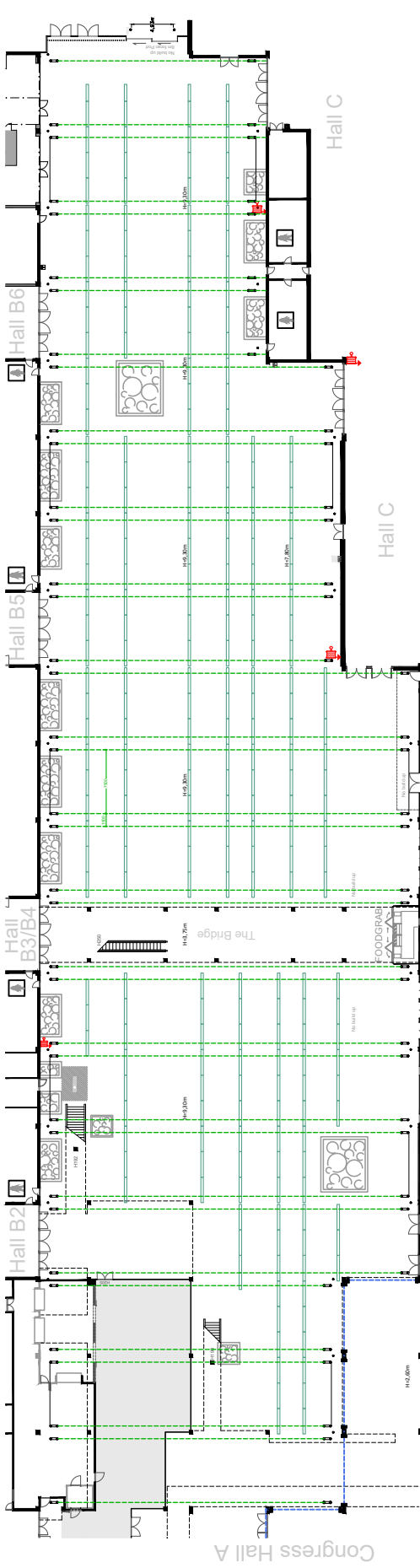
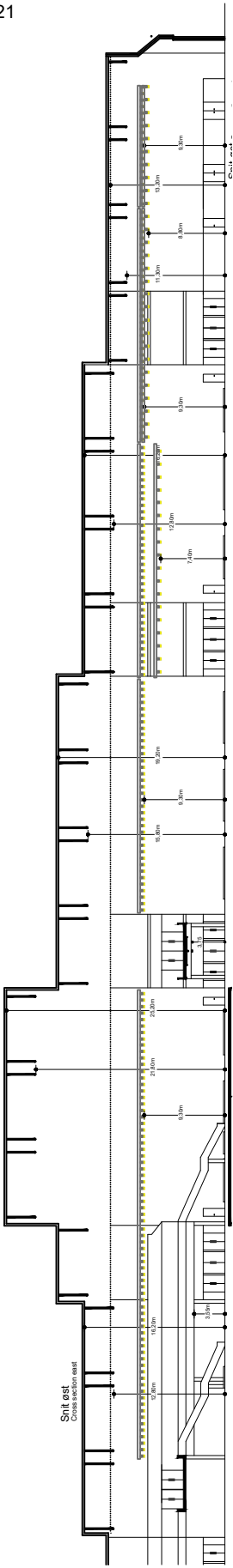
- Brand Restriktions Zone:**
- Gul - Begrenset indraining
  - Orange - Særlige betingelser og restriktioner
  - Red - Opbygning forbudt
- Fire Restrictions Zone:**
- Yellow - Limited usage
  - Orange - Special conditions and restrictions
  - Red - All Build up prohibited

## DETAILS Gulv/Floor

- 1x1m GRID
- SLANGEVINDER Fire-hose reel
- FOLDEVÆG Movable Wall
- KABELGRAV Cable duct
- SØJLE 40x40CM Pillar 40x40cm
- SØJLE 40x80CM Pillar 40x80cm
- SØJLE/SPÆR 2X Ø22CM - L=97CM Pillar/Beam 2x Ø22cm - L = 97cm
- 1 SAL, kant 1st floor ledge

# HAL E Hall E

SCALE 1:750 - FORMAT A4



## DETAILS Loft/Ceiling

- 1x1m GRID
- BRANDTRYK Fire-alarm
- SLANGEVINDER Fire-hose reel
- SPÆR Beam
- LYS RIG MISPLOTS Lighting truss with spots
- SØJLE 40x40CM Pillar 40x40cm
- SØJLE 40x80CM Pillar 40x80cm
- SØJLE/SPÆR 2X Ø22CM - L=97CM Pillar/Beam 2x Ø22cm - L=97cm

# Foyer (F0-F7)

## – en kort beskrivelse

### Adgang til Foyer

På tegningen ses svingdøre, som udgør Indgang 4, 5 og 6, der giver adgang til Foyer F0-F7.  
Gods tilkørsel bedes aftalt med arrangementskoordinator, da adgang er afhængig af den samlede udlejning af arealerne i den givne periode.

### Hallens frihøjde

Lofthøjde Foyer F1-F2, underkant spær/armatur,	10,5 meter
Lofthøjde Foyer F0+F3-F5 (sænket loft),	3,6 meter
Lofthøjde Foyer F7 underkant spær,	8,25 meter
Lofthøjde Balkon 1-2, underkant spær/armatur,	4,2-5,2 meter
Lofthøjde Balkon 3-4, underkant spær,	3,5 meter

Såfremt man har et specifikt krav til en lofthøjde i et givent område skal dette afklares med din kontaktperson i Bella Center.

### Belysning

Grundbelysning er monteret under spær i det dobbelthøje rum, og indbygget i det sænkede loft.  
Lyskilde: Skinne armatur, Solar Light LQ60. LED 2500-4000 Lumen out. 3000 Kelvin, MacAdam SDCM 3. Driver: Dali.

### Loft/Ophængning i loft

Wirer: Der kan foretages lette ophæng, så som banner.  
Kontakt venligst din kontaktperson i Bella Center for muligheder, validering og tilbud.  
Bella Center forbeholder sig ret til evt. at tilpasse placering.

### Gulv

Gulvet er et flisebelagt betongulv. Flisen er en lys betonflise. Ud for hver søjle er der lagt en mørk betonflise.

Installation af el, netværk, vandtilførelse og afløb er muligt flere steder i hallerne. Yderligere information afklares med din kontaktperson i Bella Center.

Gulvet kan klare følgende belastninger:

Hjultryk (tvillingehjul)	5.500 kg/m <sup>2</sup> .
Punktbelastning fordelt på 15x15cm	4.000 kg
Max belastning (lastbil inkl. læs)	4.000 kg/m <sup>2</sup>
Svageste punktbelastning	xxxxx

### Vinduer og mørklægning

På hallens nord- og sydvendte vægge, er der glasfacader, som giver adgang til dagslys. Det samme er gældende for ovenlys-vinduerne i det meste af hallerne F1-F4s lofter.

Vinduerne kan ikke mørklægges.

### Vægge

Brandskabe og slangevindere – må ikke tildækkes.  
Væggene varierer i udtryk fra område til område. Nogle er beklædt med trælammeler i en kombination med perforerede stålplader. Andre er beklædt med planter og en endelig er der malede betolvægge.

## Foyer (F0-F7) – a brief description (1 of 2)

### Accessing Foyer

The drawing shows the revolving doors, which make up Entrance 4, 5 and 6, which give access to Foyer F0-F7.  
Driveway for Goods should be agreed with the event coordinator, as access depends on the total use of the areas in the given period.

### Ceiling height

Ceiling height Foyer F1-F2, lower edge of truss / light fittings,	10.5 m
Ceiling height Foyer F0+F3-F5 (suspended ceiling),	3.6 m
Ceiling height Foyer F7 lower edge of truss,	8.25 m
Ceiling height Balcony 1-2, lower edge of truss/light fittings,	4.2-5.2 m
Ceiling height Balcony 3-4, lower edge of truss,	3.5 meters

If you have a specific requirement for a ceiling height in a given area, this must be clarified with your contact person in Bella Center.

### General lighting

Basic lighting in the double-height room is mounted under truss, and built in the suspended ceiling.  
Light source: Rail luminaire, Solar Light LQ60. LED 2500-4000 Lumen out. 3000 Kelvin, MacAdam SDCM 3. Driver: Dali.

### Ceiling/ suspension in the ceiling

Wires: Light suspensions can be made, such as a banners.  
Please contact your contact at Bella Center for options, validation and offers.  
Bella Center reserves the right to to customize location.

### Floor

The floor is a tiled concrete floor. The tile is a light concrete tile. Next to each pillar is a dark concrete tile.

Installation of electricity, network, water supply and drainage is possible in several places in the halls. Further information is clarified with your Bella Center contact person.

The floor can withstand the following loads:

Wheel pressure (twin wheels)	5,500 kg / sq.m.
Single point load per 15x15cm	4,000 kg
Max load (load incl. weight of truck)	4,000 kg / sq.m.
Weakest point load	xxxxx

### Vinduer og mørklægning

On the north and south-facing walls of the hall, there are glass facades that provides access to daylight. The same applies to the skylights in most of the ceilings of halls F1-F4.

The windows cannot be blacked out

### Walls

Fire cabinet and hose reel – must not be concealed.  
The walls vary in expression from area to area. Some are covered with wooden slats in combination with perforated steel plates. Others are covered with plants and finally there are painted concrete walls.

# Foyer (F0-F7)

## – fortsat

### Elevatorer

Følgende elevatorer til 1sal områder:

Balkon 1 elevator:

Max belastning, antal x personer  
 Max belastning, antal x kg  
 Døråbning (bxh): 90 x 207 cm  
 Elevator dybde: 140 cm  
 Elevator bredde: 110 cm  
 Elevatortype: Personeelevator (ikke gods)

Balkon 3/4 elevator:

Max belastning, 13 personer  
 Max belastning, 1000 kg  
 Døråbning (bxh): 100 x 210 cm  
 Elevator dybde: 210 cm  
 Elevator bredde: 110 cm  
 Elevatortype: Personeelevator (ikke gods)

F7 elevator (ved mødelokale 22):

Max belastning, 8 personer  
 Max belastning, 625 kg  
 Døråbning (bxh): 91x 198 cm  
 Elevator dybde: 113 cm  
 Elevator bredde: 125 cm  
 Elevatortype: Personeelevator (ikke gods)

Aud. 10-12 backstage elevator:

Max belastning, antal x personer  
 Max belastning, antal x kg  
 Døråbning (bxh): 110 x 204 cm  
 Elevator dybde: 260 cm  
 Elevator bredde: 140  
 Elevatortype: Personeelevator (ikke gods)

### Gods til balkonområder

Det er muligt at benytte gods-elevator fra Foyer F6 til Balkon 3/4

Desuden er der muligt, at åbne gelænder og dermed løfte paller fra stueetagen fra Foyer F1 til Balkon 1, fra Foyer F2 til Balkon 2 og fra Foyer F6 til Balkon 3/4.

Kontakt venligst din kontaktperson i Bella Center for muligheder, validering og tilbud.

### Luft

F0, F1, F2, F3 & F4

Foyeren har en kombination af strålevarme og aircondition.

F5

Foyeren har aircondition.

F6 & F7

Foyeren har ventilation og opvarmning.

## Foyer (F0-F7) – a brief description (2 of 2)

### Elevators

Following elevators to 1st floor areas:

Balcony 1 elevator:

Max load, number x people  
 Max load, number x kg  
 Door opening (wxh): 90 x 207 cm  
 Elevator depth: 140 cm  
 Elevator width: 110 cm  
 Elevator type: Personnel elevator (not freight)

Balcony 3/4 elevator:

Max load, 13 people  
 Max load, 1000 kg  
 Door opening (wxh): 100 x 210 cm  
 Elevator depth: 210 cm  
 Elevator width: 110 cm  
 Elevator type: Personnel elevator (not freight)

F7 elevator (at meeting room 22):

Max load, 8 people  
 Max load, 625 kg  
 Door opening (wxh): 91x 198 cm  
 Elevator depth: 113 cm  
 Elevator width: 125 cm  
 Elevator type: Personnel elevator (not freight)

Aud. 10-12 backstage elevator:

Max load, number x people  
 Max load, number x kg  
 Door opening (wxh): 110 x 204 cm  
 Elevator depth: 260 cm  
 Elevator width: 140  
 Elevator type: Personnel elevator (not freight)

### Goods to balcony areas

It is possible to use the freight elevator from Foyer F6 to Balcony 3/4

In addition, it is possible to open railings and thus lift pallets from the ground floor from Foyer F1 to Balcony 1, from Foyer F2 to Balcony 2 and from Foyer 6 to Balcony 3/4.

Please contact your contact at Bella Center for options, validation and offers.

### Air

F0, F1, F2, F3 & F4

The Foyer has a combination of radiant heating and air conditioning.

F5

The Foyer has air conditioning.

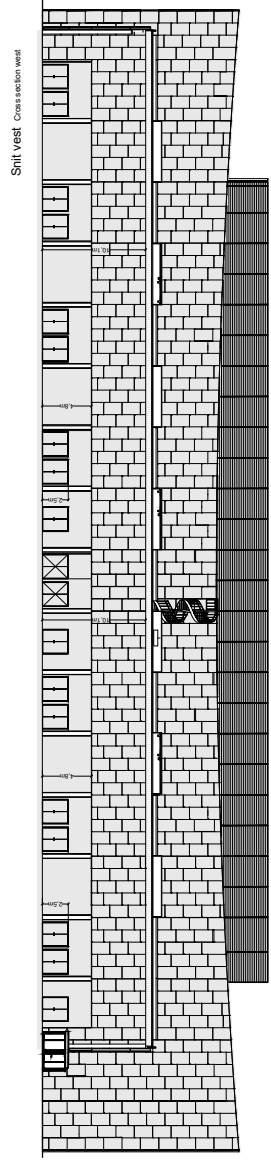
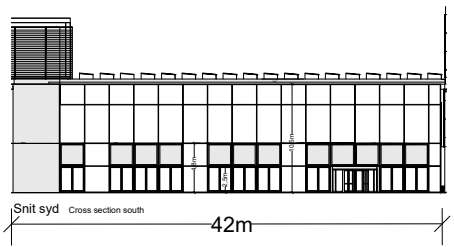
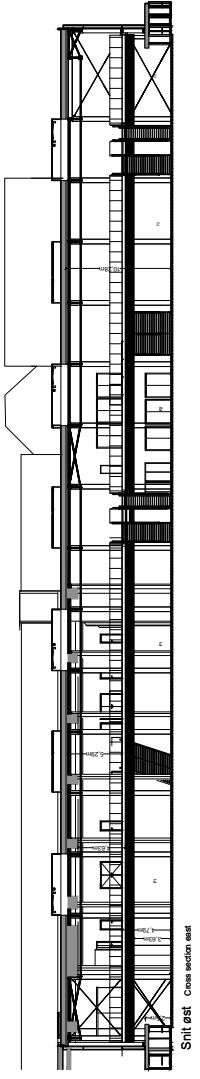
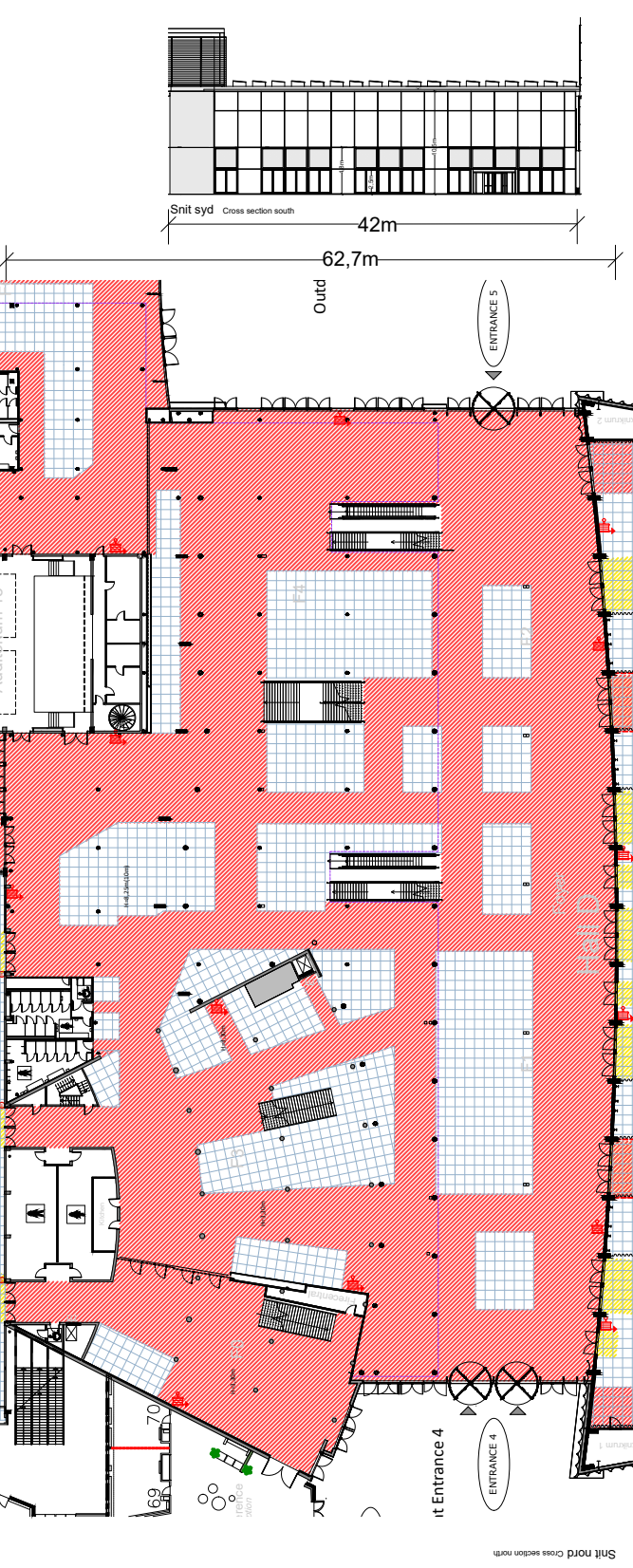
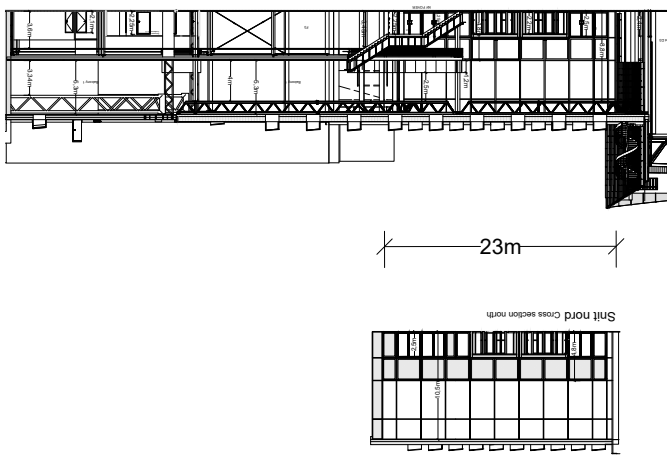
F6 & F7

The Foyer has ventilation.

# Foyer F0-F5

# Foyer F0-F5

SCALE 1:750 - FORMAT A4



## DETAILS Gulv/Floor

1x1m GRID

BRANDTRYK Fire-alarm

SLANGEVINDER Fire-hose reel

SØJLER Pillars

VINDFANG Storm flap

1 SAL., kant 1st floor ledge

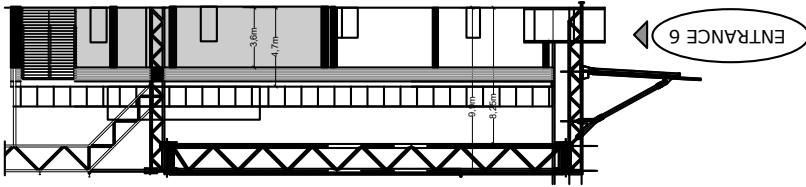
**Brand Restriktions Zone:**  
 -Gul- Begrenset indretning  
 -Orange- Særlige betingelser og restriktioner  
 -Red- Opbygning forbudt

**Fire Restriktions Zone:**  
 -Yellow- Limited usage  
 -Orange- Special conditions and restrictions  
 -Red- All Build-up prohibited

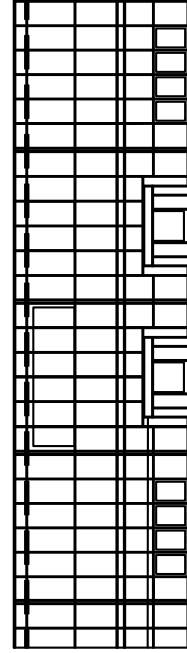
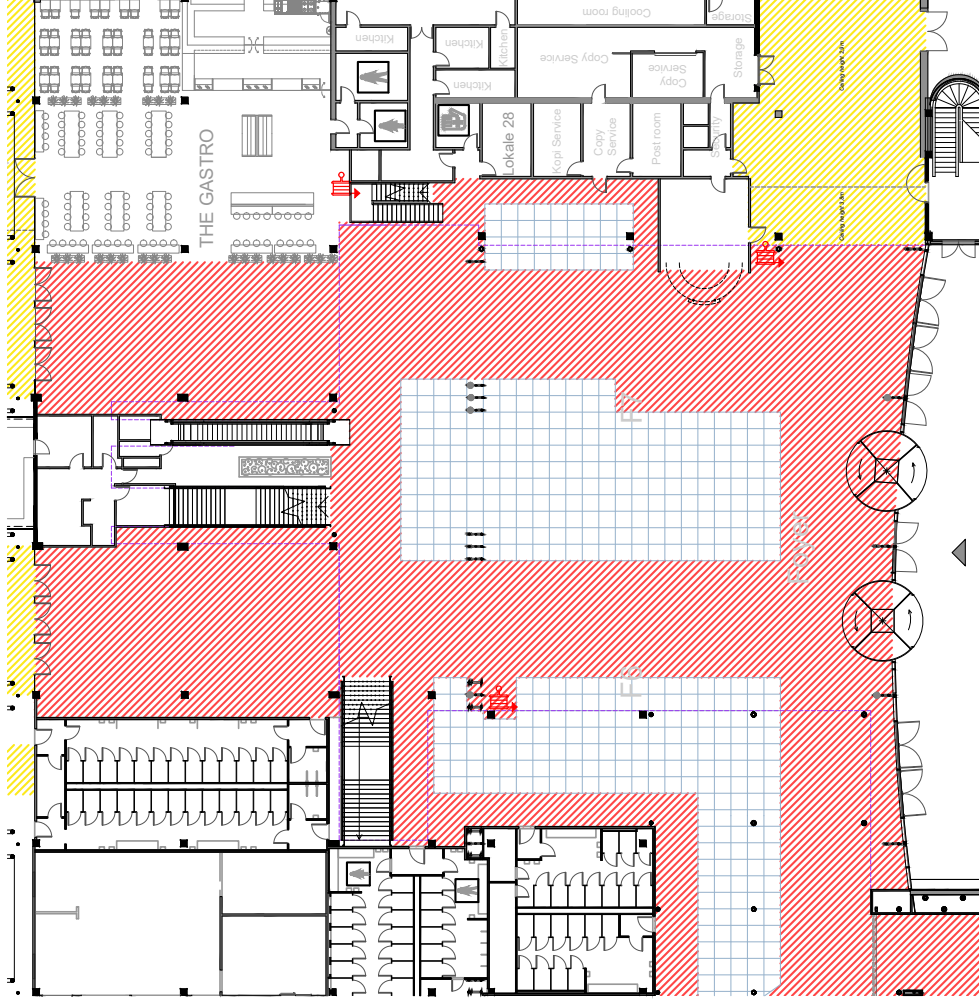


# Foyer F6/F7 Foyer F6/F7

SCALE 1:500 - FORMAT A4



Snit nord Cross section north



Facade øst Facade east

## DETAILS Gulv/Floor

- 1x1m GRID
- BRANDTRYK Fire-alarm
- SLANGEVINDER Fire-hose reel

- 1 SAL, kant 1st floor ledge

- Brand Restriktions Zone:  
- Gul- Begrænset indretning  
- Orange- Særlige betingelser og restriktioner  
- Rød- Opbygning forbudt

- Fire Restriktions Zone:  
- Yellow- Limited usage  
- Orange- Special conditions and restrictions  
- Red- All Build up prohibited

**BELLA CENTER COPENHAGEN**

Center Boulevard 5

DK 2300 • CPH S

Tel +45 3252 8811

[bc@bellacenter.dk](mailto:bc@bellacenter.dk)

[www.bellacentercopenhagen.dk](http://www.bellacentercopenhagen.dk)

**BELLA ·**  
**CENTER**  
COPEN  
HAGEN