



Endorsed by
ESTRO

Accredited by the Sri Lankan Medical Association

Transition from 2D to 3D CT Guided Brachytherapy for Cervical Cancer

Open from 01. 09. 2022 until 01. 1. 2023.

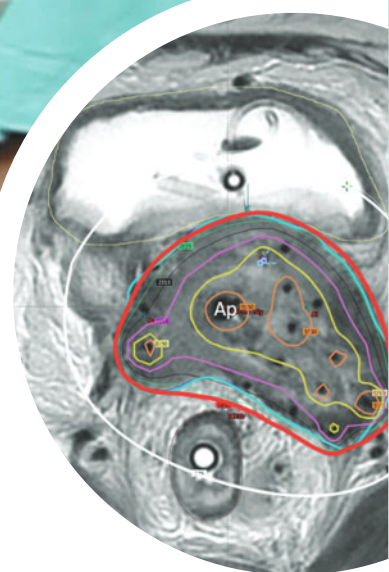
**CLICK HERE TO
VISIT WEBSITE**

Course Coordinators:

Nuradh Joseph

Nadarajah Jeyakumaran

Primoz Petric



International faculty will share their knowledge on topics from anatomy and pathology to external beam radiotherapy and brachytherapy techniques, contouring, optimization, and reporting.
Only available for citizens of Sri Lanka.



Endorsed by
ESTRO

Accredited by the Sri Lankan Medical Association

GENERAL INFORMATION

Course timing and format:

Online course, based on pre-recorded teaching sessions.

The sessions will be open for viewing from 01. 09. 2022 - 01. 01. 2023.

Participants can access sessions at their own convenience.

Net time to cover all topics: approximately 3 days.

Course Program

Course program consists of >40 teaching sessions, including:

- pre-recorded lectures
- videos
- practical demonstrations
- resource presentations

Online chat is available for comments and to ask the experts.

Post-course webinar will address any remaining questions and enable open discussion.

Access to resources: literature, dose calculator, reporting templates, examples of standard operating procedures, clinical drawing templates, study protocols, etc.

Registration

Registration is free and will open on 01. 07. 2022.

The course is intended exclusively for participants from Sri Lanka.

Live Workshop:

The course will be followed by a live workshop, on application techniques, contouring, and dose optimization. Plans for the workshop are in progress.



Endorsed by⁷
ESTRO

Accredited by the Sri Lankan Medical Association

COURSE PROGRAM

Opening Session

Welcome and Introduction
Course Overview

Nadarajah Jeyakumaran
Primoz Petric

Anatomy, Pathology, and Epidemiology

Cervix and regional lymph nodes: normal and pathologic anatomy on imaging
Pathology of cervical cancer
Cervix cancer in Sri Lanka: Epidemiology, challenges, and aspirations

Chinthaka Appuhamy

Gayani Ranaweera
Nuradh Joseph

External beam Radiotherapy and Chemotherapy

Cervix cancer chemoradiotherapy: overview
Contouring for external beam radiotherapy
Management of Para-aortic nodal region
From 3D CRT to IMRT
Image Guided Radiotherapy
Chemotherapy: neoadjuvant, concurrent, adjuvant

Ina J Schulz
Li Tee Tan
Bhavana Rai
Kari Tanderup
To be defined
Remi Nout

Conventional Brachytherapy of cervical cancer

Intracavitary applicators and Manchester point A
Reference points, 60 Gy V, TRAK: ICRU 38 Report
Optimization of intracavitary loading and its limitations
Parametrial boost with EBRT and its limitations

Primoz Petric
Primoz Petric
Christian Kirsits
Primoz Petric

Image guided brachytherapy

Rationale for image guided brachytherapy
Target volume concepts: MRI
Target volume concepts: CT
Target volumes contouring on CT: examples
Organs at risk: contouring and points

Jacob Lindegaard
Primoz Petric
Umesh Mahantshetty
Laura Motisi
Primoz Petric



Endorsed by⁷
ESTRO

Accredited by the Sri Lankan Medical Association

COURSE PROGRAM

Application technique

Patient preparation for image guided brachytherapy
Limitations of intracavitary applicators
Combined intracavitary and interstitial applicators
Planning of brachytherapy implant geometry
IC +/- IS application technique: Video 1
IC +/- IS application technique: Video 2
Role of US for real-time guidance of application

Laura Motisi
Primoz Petric
Primoz Petric
Primoz Petric
Umesh Mahantshetty
Primoz Petric
Max Schmid

Dose optimisation & Treatment

Applicator reconstruction
Equivalent doses in 2 Gy / fraction (EBRT + BT)
Planning aims & dose constraints: target & OAR
Dose optimisation with IC/IS applicators
Treatment reporting: ICRU 89
Closing the gap: long OTT or Hypofractionation?

Taran P Hellebust
Adam Shulman
Monica Serban
Christian Kirisits
Nicole Nesvacil
Primoz Petric & Umesh Mahantshetty

Outcome of IGBT

Outcome MRI
Outcome CT & CT registration study
Prognostic factors: local control
Prognostic factors: morbidity

Peter Hoskin
Umesh Mahantshetty
Max Schmid
Alina Sturdza

Technical and regulatory

Radiation Protection – Design of a Brachytherapy Facility
Safety and Security in Brachytherapy.
Commissioning

Michael Baumgartl
Michael Baumgartl
Adam Shulman

Practical support & Tools

EQD2 Calculator: App demonstration
Clinical drawings
T-Score
References, resources, training opportunities

Nicole Nesvacil
Laura Motisi
Jacob Lindegaard
Primoz Petric